

**ASECAP DAYS**



**MILANO 2024**

# Using digital twin LiDAR data for monitoring bridges and retaining walls

**Jaka Gorišek, DARS**

ORGANIZED BY



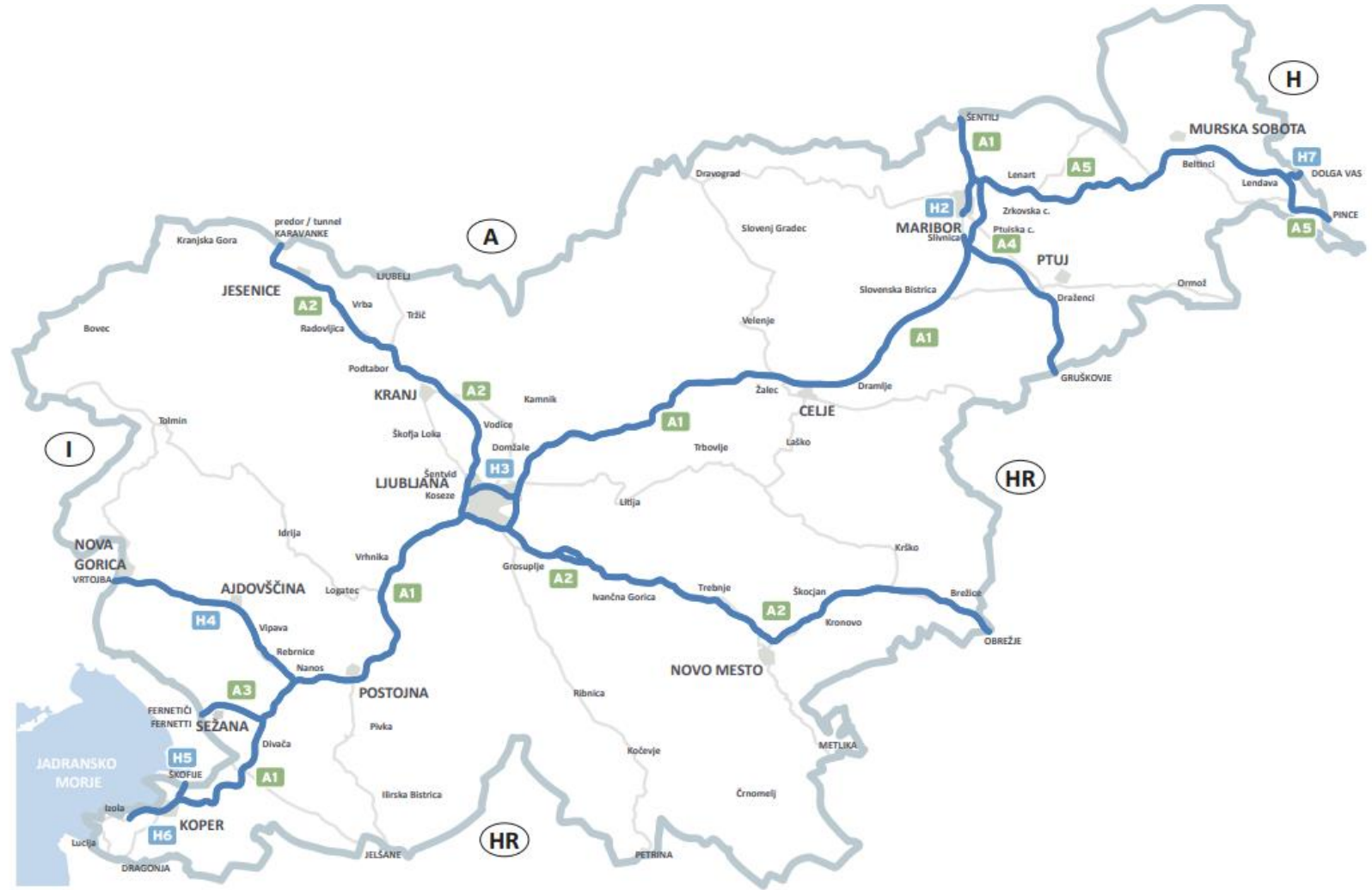
HOSTED BY





## About DARS

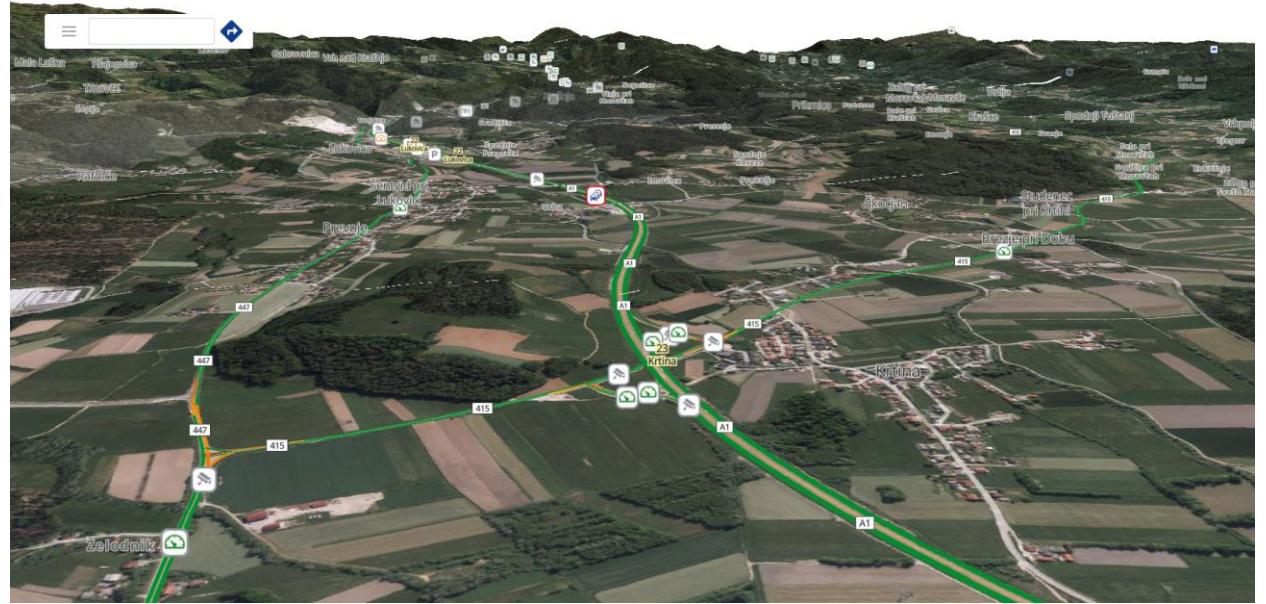
- Tolling, maintenance, road management, investments and reconstructions in Slovenia
- 625km of motorways and expressways
- 421 bridges and viaducts
- 351 geotechnical objects (retaining and supporting walls)





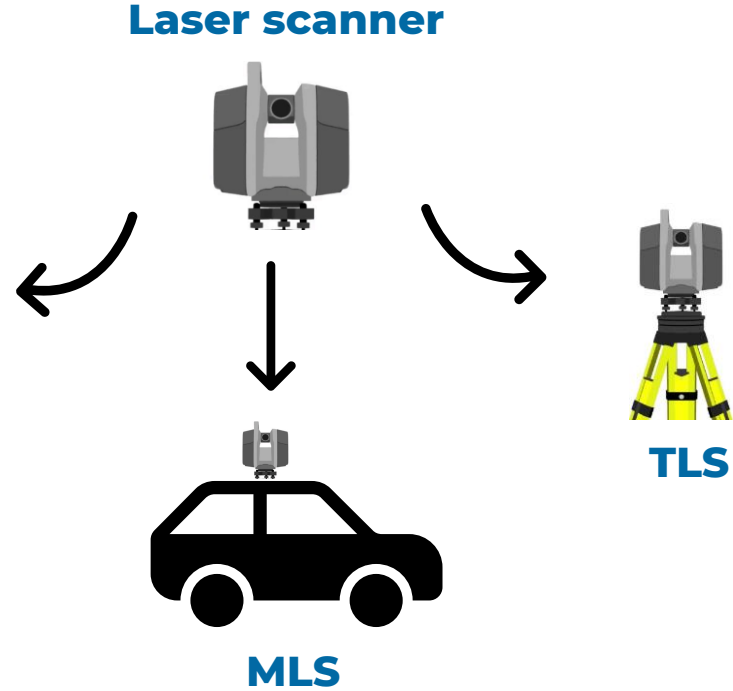
# Digital Twin

- Central spatial-geographical information system
- Data from infrastructure, equipment, real-estate, traffic, etc. DBs
- Online viewing, measuring, queries, data sharing



## LIDAR data

- Light Detection and Ranging
- Highly accurate 3D pointclouds – georeferenced
- Captured different ways
- Basis for reconstructions, planning, simulations, online measurements ...

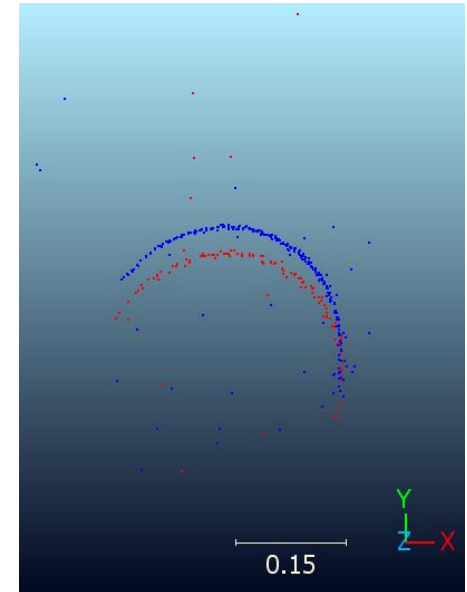
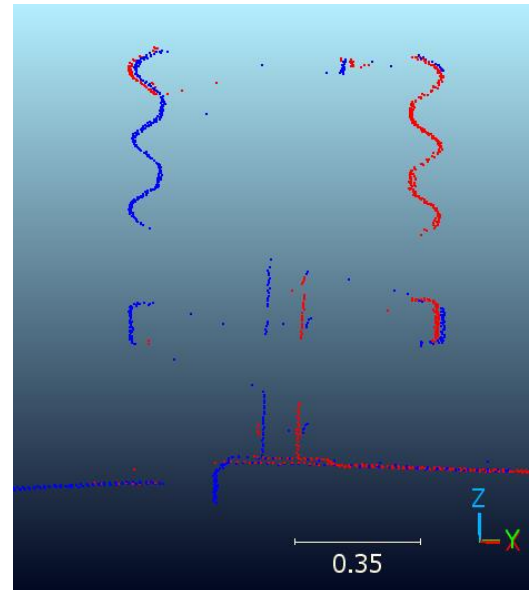
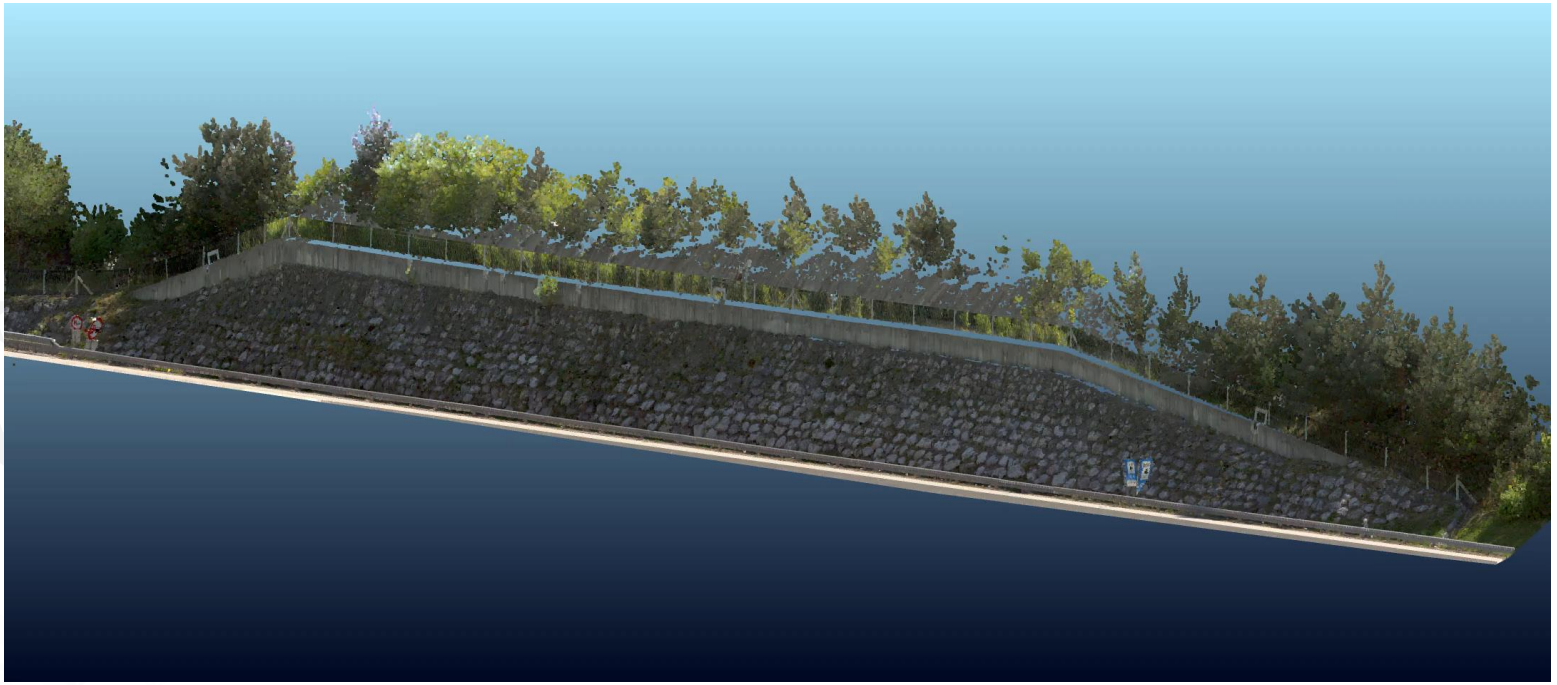






# LIDAR based monitoring

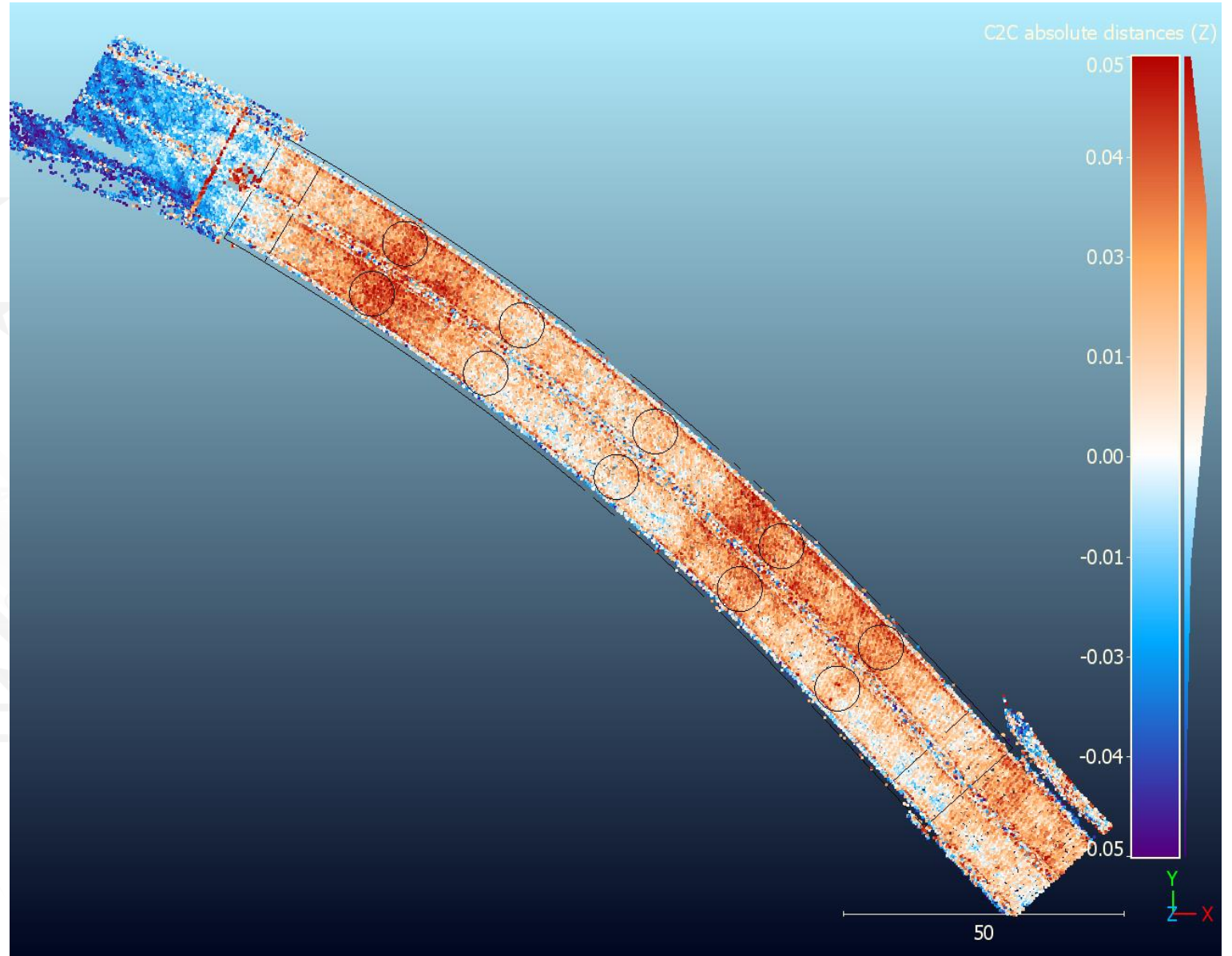
- Comparing LIDAR pointclouds captured in different years for the same location
- Data verification and adjustment
- Pointcloud modelling
- Model comparison





## LIDAR based monitoring - bridge

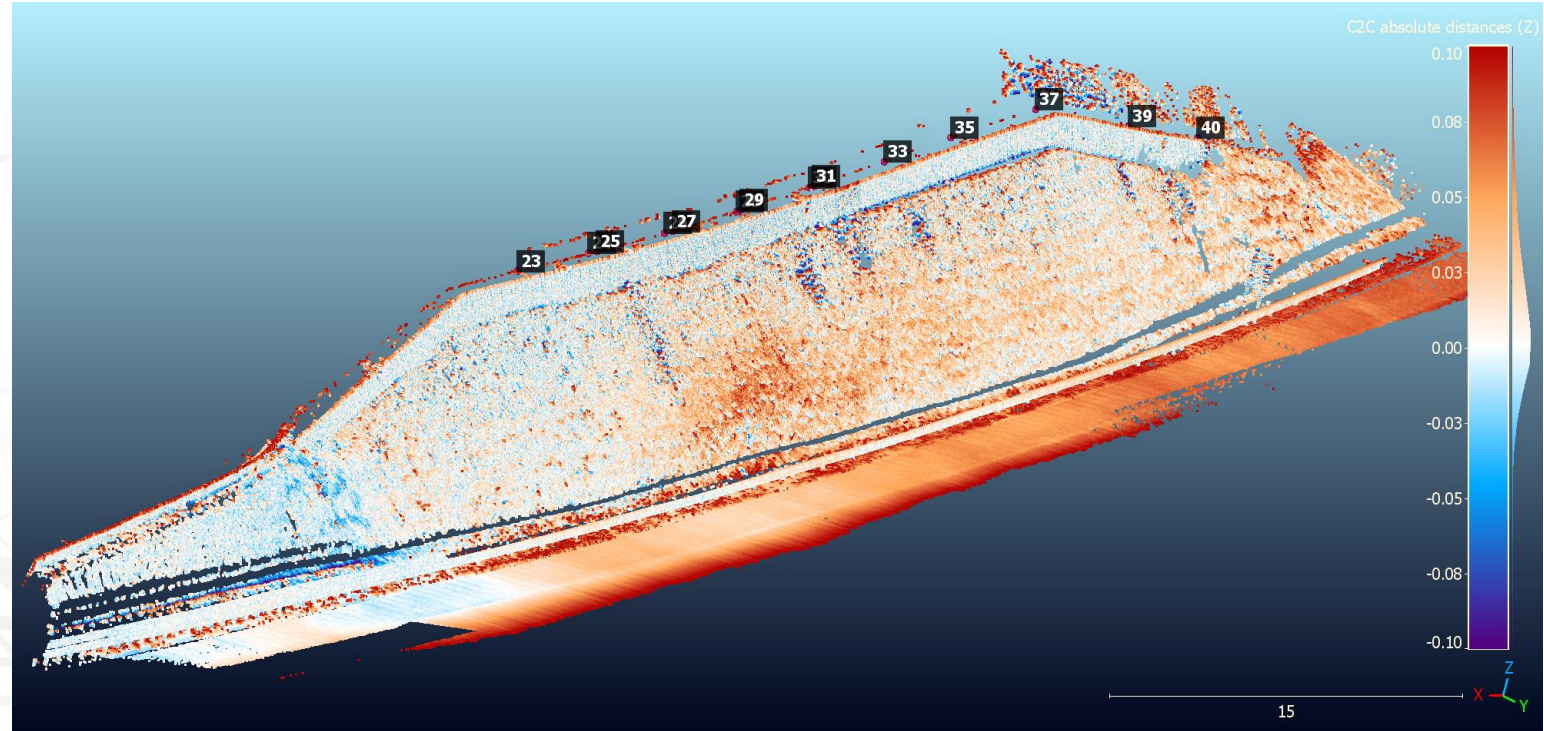
- Bridge Boršt I. on H4 expressway
- Length 153m, constructed in 2006
- Challenging geological area
- Annual monitoring
- Successful detection of horizontal and vertical movements of the structure





# LIDAR based monitoring – retaining wall

- Retaining wall Županov hrib on A1 motorway
- Length 234m, constructed in 1997
- Annual monitoring from 2008
- Successful detection of horizontal and vertical movements of the structure

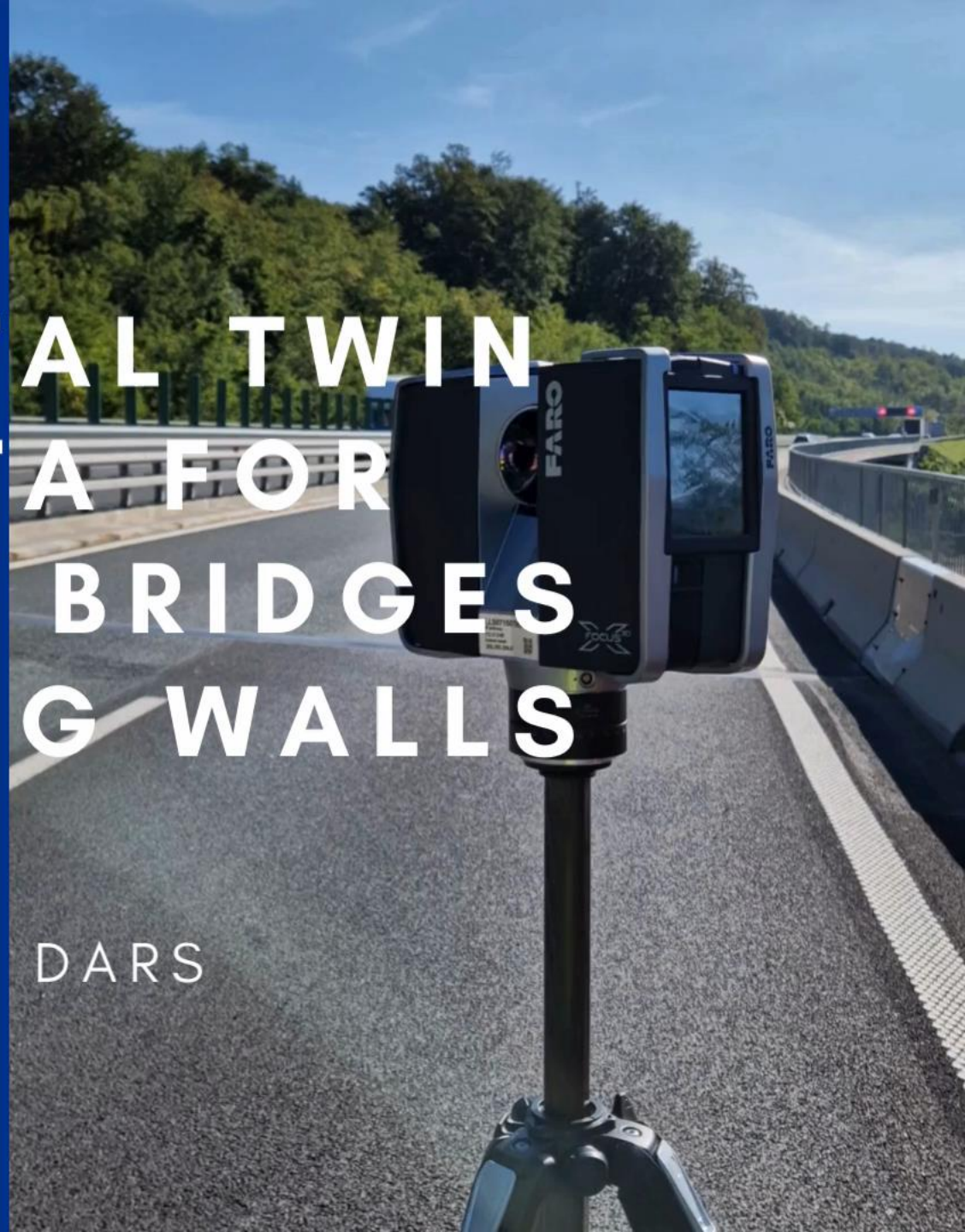




DARS

USING DIGITAL TWIN  
LIDAR DATA FOR  
MONITORING BRIDGES  
AND RETAINING WALLS

Jaka Gorisek, DARS







**THANK  
YOU**  
*GRAZIE*

---

JAKA GORIŠEK  
jaka.gorisek@dars.si  
+386 51689414

**DARS**



HOSTED BY



ORGANIZED BY

