

ASECAP DAYS



**A-to-Be**

By **Briso Group** 

# Road and Traffic Management at the "Click of a Button"

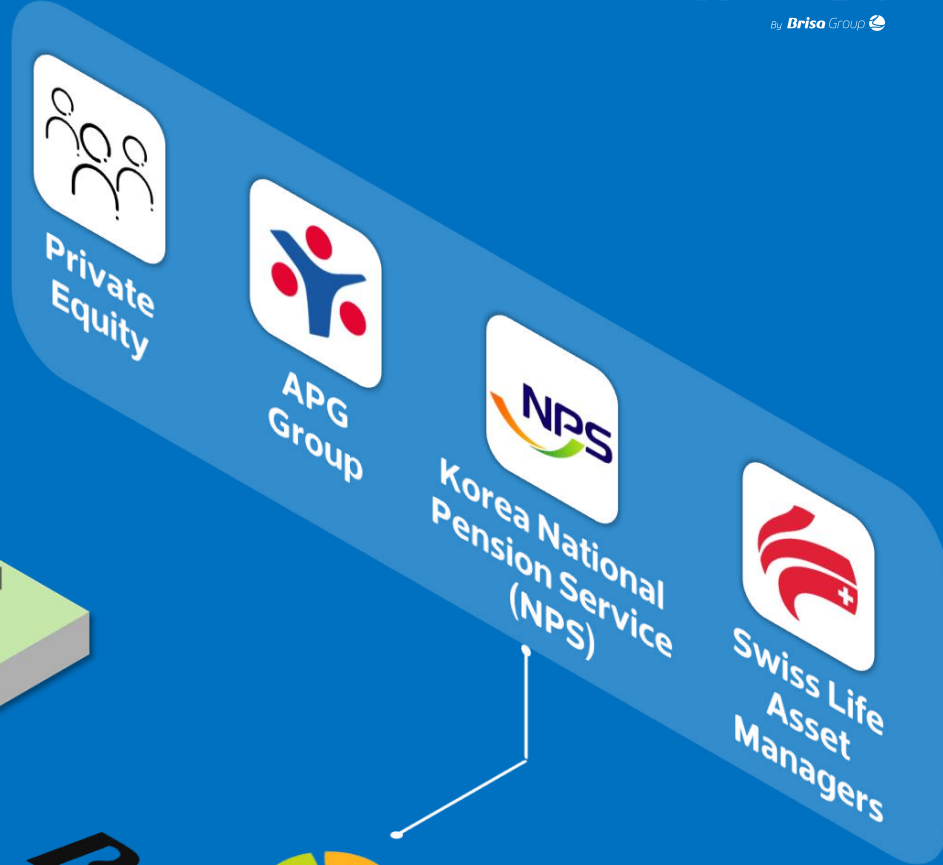
2024 ASECAP DAYS



**Luis Mafra**  
Head of Business  
Development

# Shareholders

Strong investment profile

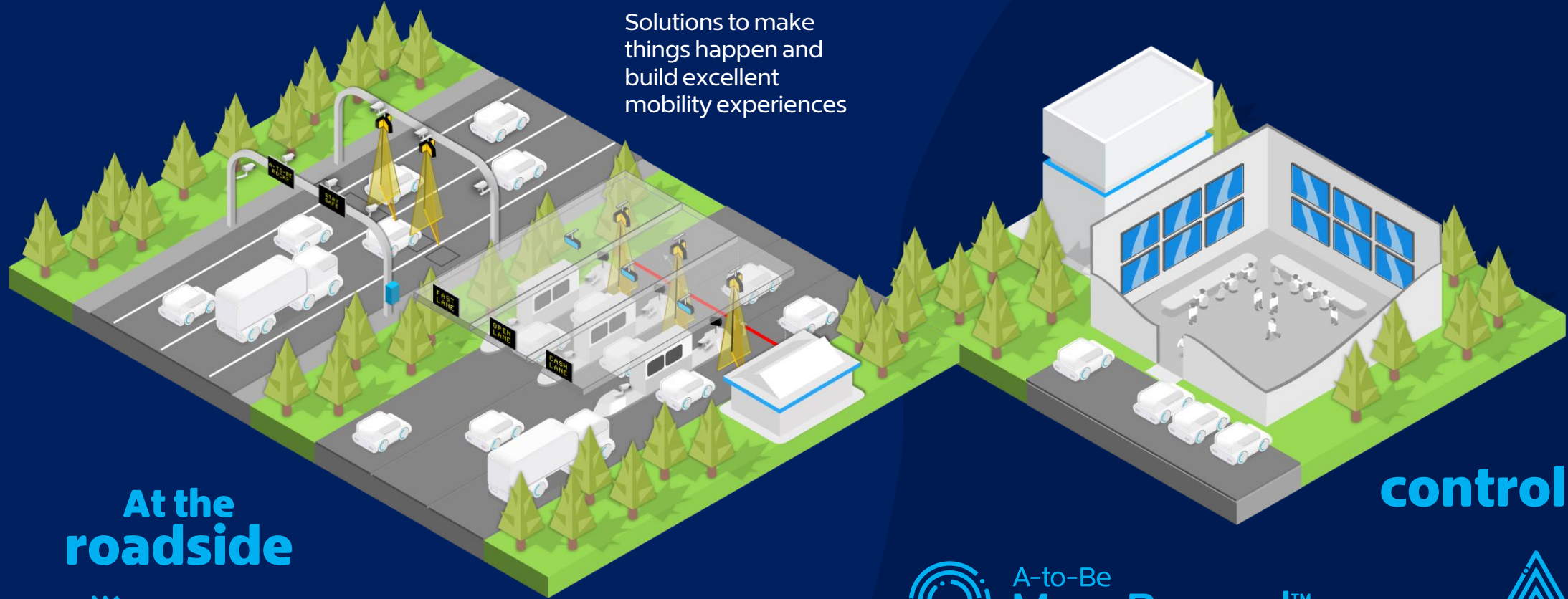


# 50 years

Long Heritage



Solutions to make things happen and build excellent mobility experiences



**At the roadside**



**TOLLING RSE SYSTEMS**

Covering all toll payment modes and operational combinations, from manual to satellite.

**URBAN MOBILITY**

Integrating transit payments and mobility services into one hand-held platform.

**At the control room**



**TOLLING & RUC BACK OFFICES**

For processing transactions, managing accounts and implement business rules.

**MOBILITY PLATFORM**



**TRAFFIC MANAGEMENT**

Operational and business platforms for tolling and mobility companies

Linking hardware and software

Today let's focus on

**TIME**





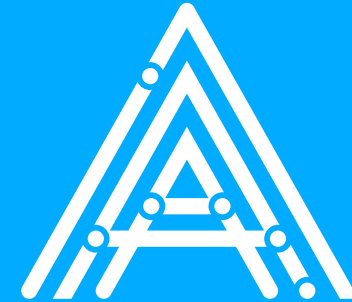
**Time** is one thing  
we all have in common,  
but it's also the one thing  
that we can use differently.

# What does *time* mean to a road operator?

- Efficiency
- Safety & Response
- Maintenance & Construction
- Economic Impact
- Client Satisfaction
- Compliance & Regulations



Meet



A-to-Be  
**Atlas™**

# ATLAS

Atlas offers a unified traffic management platform with the ability to process over **150.000 incidents per year.**

**5**

concessions  
in the US and  
EU

**286**

roadside  
digital signs

**386**

tunnel  
devices

**819**

video  
Cameras

**1117**

Managed  
lanes

**1,1b**

vehicles  
per year



# Atlas is...



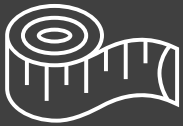
## WEB-BASED

100% web-based platform



## INTERACTIVE

A single integrated user interface, instead of multiple vertical solutions



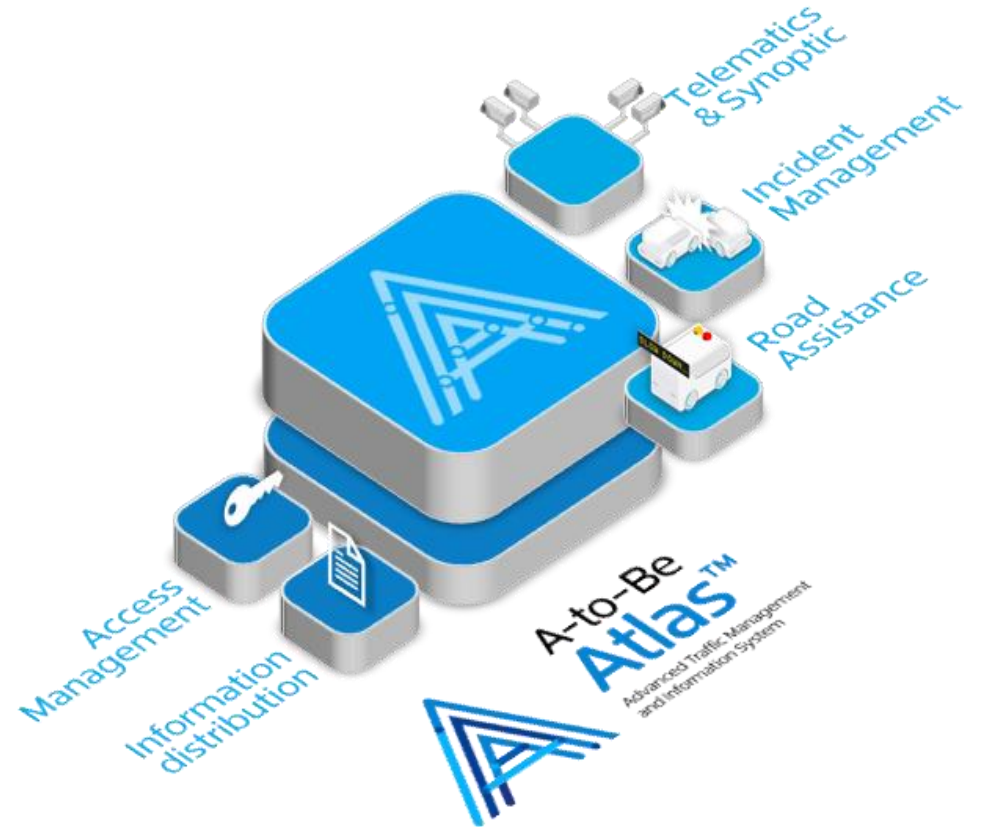
## MODULAR

Using a modular approach allows for scalability and a configurable work environment



## MULTI...

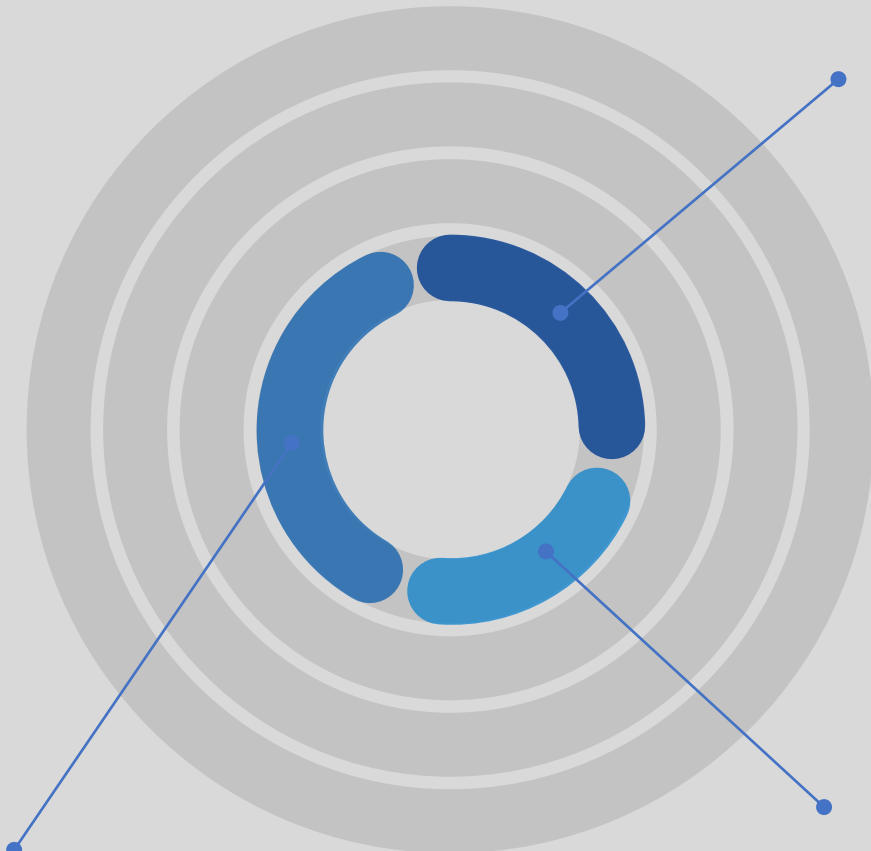
Atlas is a multi-protocol, multiple layer, multi-profile, multi-language and, last but not least, multi-concession



## CORE-BASE SERVICES

- Composed by 3 core modules
- Modular and highly configurable to meet all of road operators' needs, without any unwanted extras

**Administration**  
Security and configuration management



**Synoptics**  
Network overview

**Telematics**  
Roadside device's control

## OPERATIONAL MANAGEMENT

- The second layer is the one that supports the daily operations
- Unified-vision: All traffic management information in a single front-end, connecting roadside activity with the TMC

**Mobile app ops**  
Portable channel for operations



# MAINTENANCE & ASSET MANAGEMENT

→ Used by the maintenance and supervision teams to ensure the quality of the data being collected and to assure an efficient monitoring of the road infrastructure

## Assets

Infrastructure asset management

## Assurance

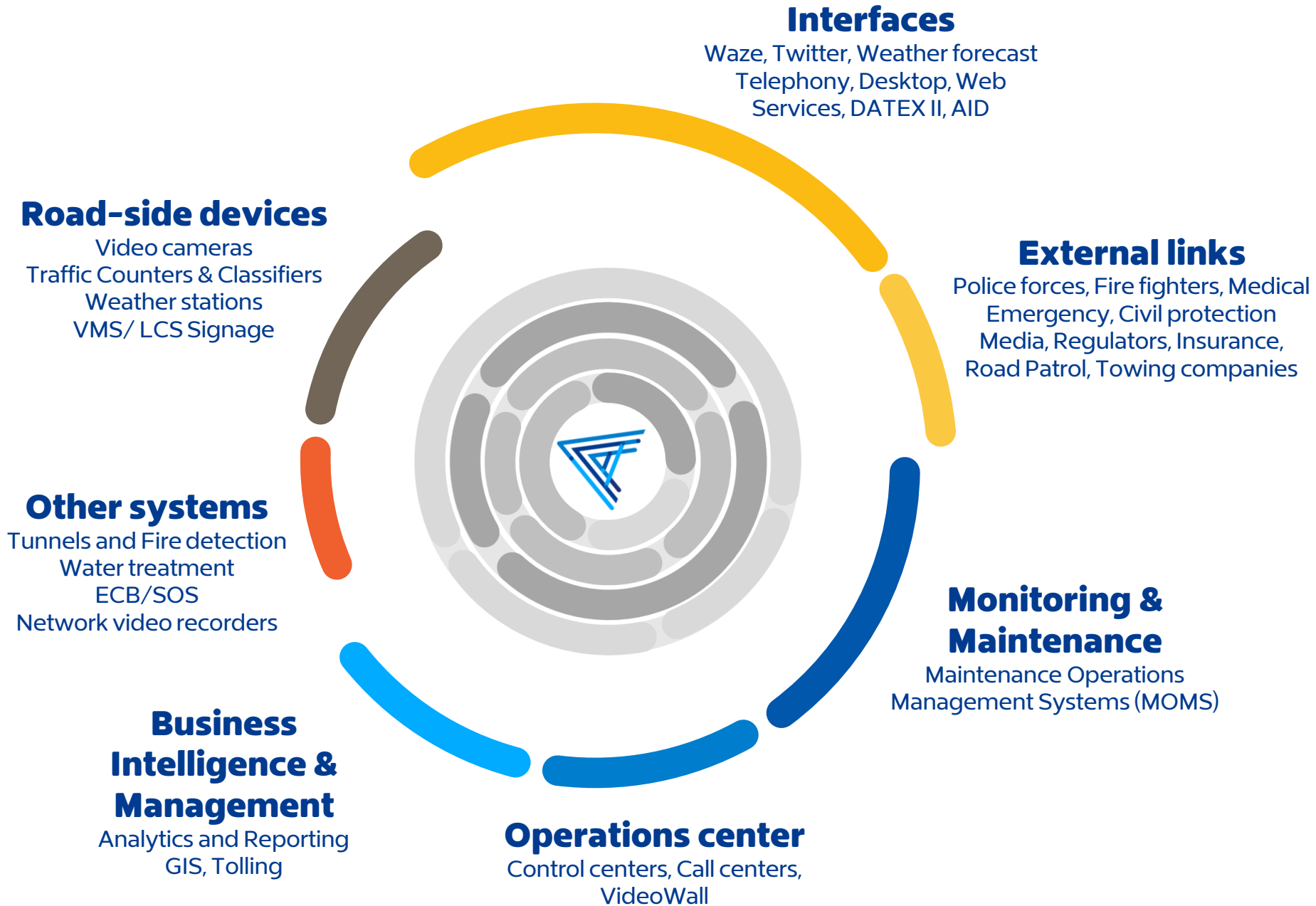
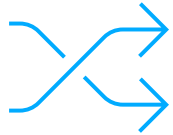
Revenue and Quality control



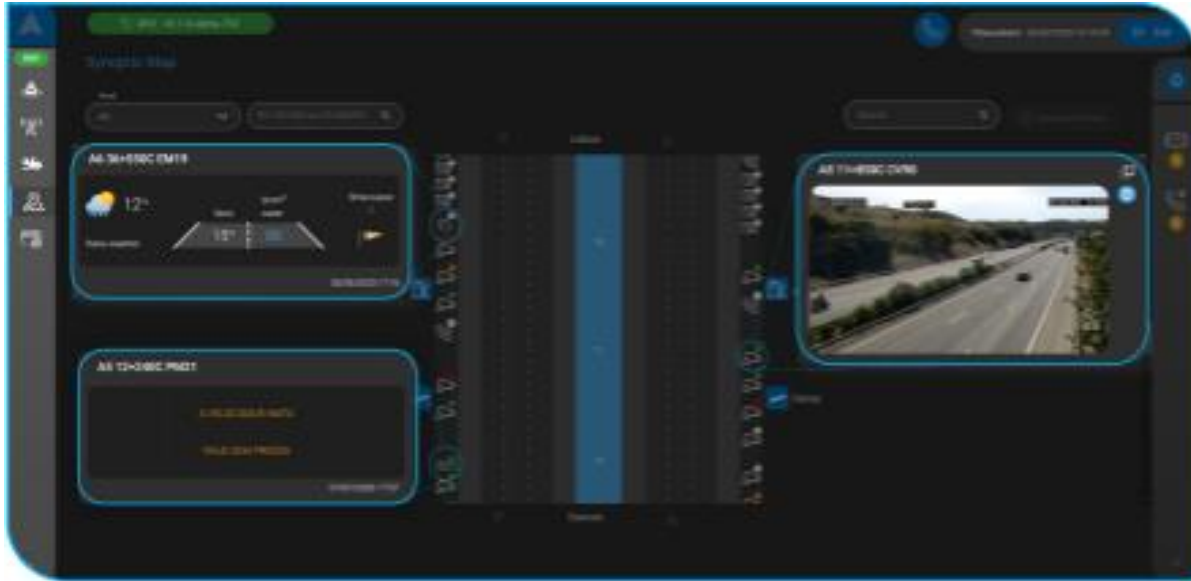
## Maintenance

Device monitoring and Repair

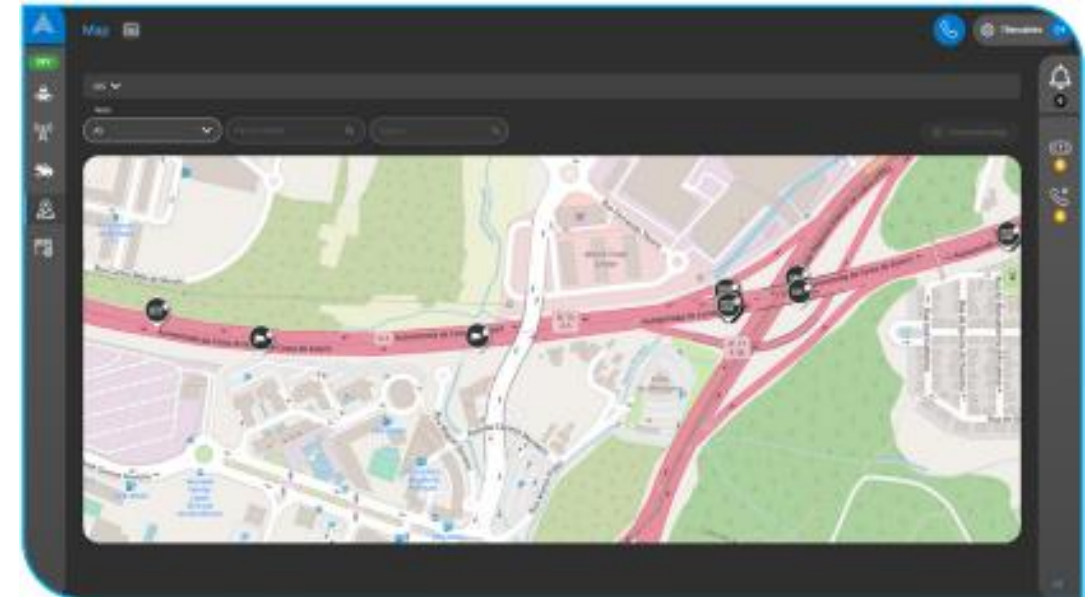
# ATLAS INTERFACES



- Dashboards that summarize **the most relevant indicators allow the exchange of traffic information.**



- **The user interface (UI) results from a Design Thinking process using User Experience focus groups with road operators' power users.** The screen shown here illustrates the ability to have multiple subsystems in a single environment.



- The representation of the infrastructure under operation can be **geographical as shown here or schematic.** The user interface can adopt **either a brighter light mode or a darker mode**, less tiring to the human eye adopting best practices in application design.



# references

Selected successful implementations

**Northwest Parkway**  
**Northwest Parkway**  
Colorado, USA, since 2016



**Atlântico Concession**  
**AEA**  
Portugal, EU, since 2009



**Lisbon Tagus Bridge**  
**Lusoponte**  
Portugal, EU, since 2019



**Douro Litoral Concession**  
**AEDL**  
Portugal, EU, since 2009



**Brisa Concession**  
**Brisa Autoestradas**  
Portugal, EU, since 2007



**Litoral Oeste Concession**  
**AELO**  
Portugal, EU, since 2009



**Baixo Tejo Concession**  
**AEBT**  
Portugal, EU, since 2009



**Marão Tunnel Concession**  
**Tunel of Marão (BCR)**  
Portugal, EU, since 2009



CCO,  
Brisa Auto-estradas de Portugal



Control center,  
Auto-estradas do Atlântico





# Key Takeaways



A-to-Be Atlas design approach brings road operators closer to better informed decision-making when evolving to our platform.

- Flexibility is the key
- Continuity
- Expansion Add-ons
- For the long-run

## → Main Benefits:

**Integrated operations view and improved operator experience**  
seamless command and control system to be performed within a **unified platform**, with a secure, role-based, access control mechanism.

**Improved perceived safety and security**, along with greater operations efficiency

**Cost optimization** of the allocated team with improvements in readiness and fatigue levels;

ATMIS platform is ready to **incorporate new systems and expand** the range of covered facilities in the future

# A-to-Be

By **Brisa** Group 