

46TH ASECAP STUDY & INFORMATION DAYS



Traffic management on the international corridors with new technologies

www.asecapdays.com

Ulrich Zorin, M.Sc.
Head of Department
Traffic and Traffic Safety Management
DARS d.d., Motorway Company in the Republic of Slovenia

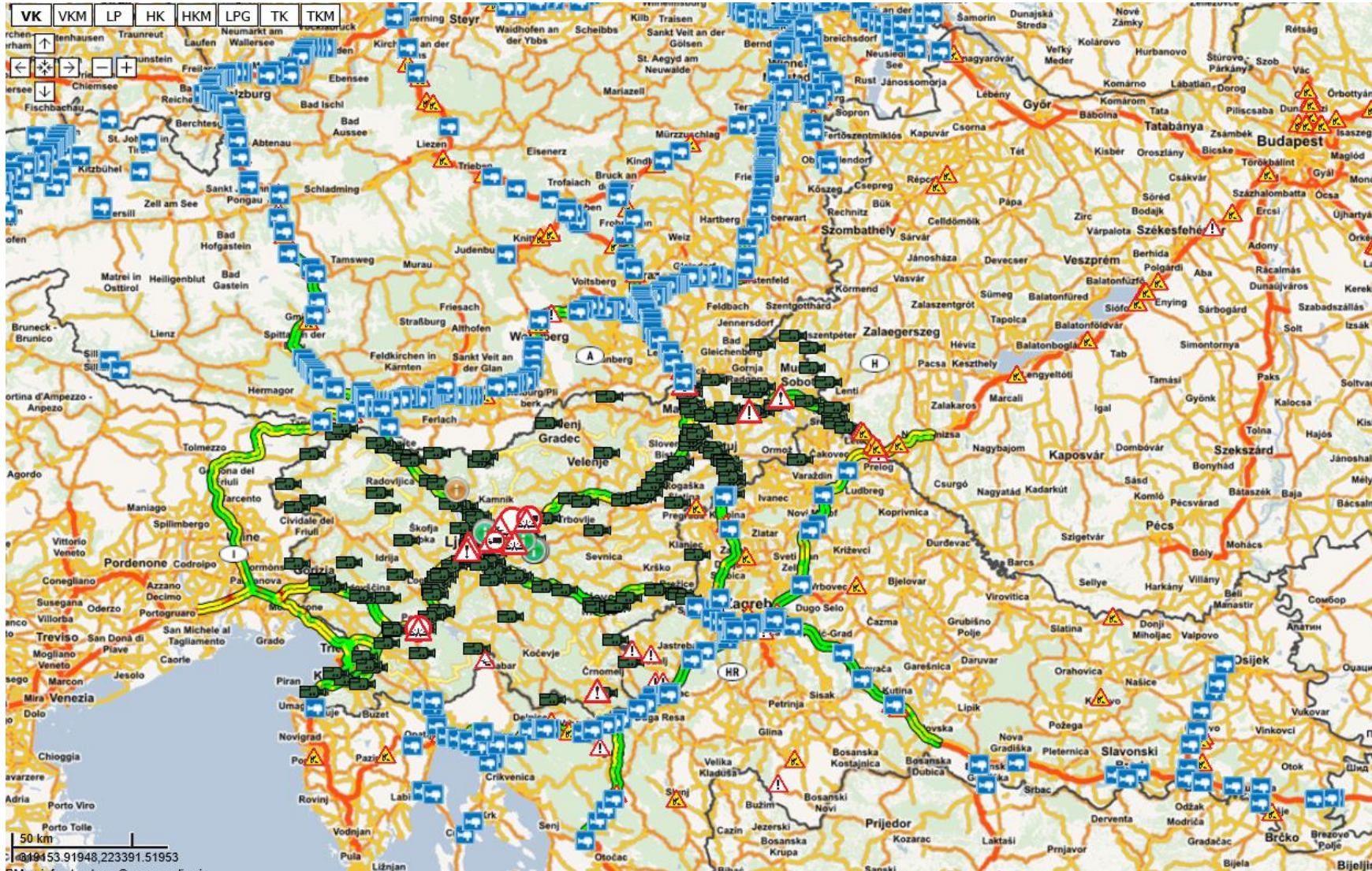


Organized by



- INTERNATIONAL TRAFFIC INFORMATION – THE KEY TO THE SUCCESSFUL TRAFFIC MANAGAMENT
- UNIFORM **ITS** ON THE MAIN CORRIDORS
- REAL TIME COORDINATION BETWEEN TMCs

INTERNATIONAL TRAFFIC INFORMATION – THE KEY TO THE SUCCESSFUL TRAFFIC MANAGEMENT



DATA EXCHANGE!!

Single point of access for the state road network Publicly accessible data and information

PIC TRAFFIC INFORMATION CENTRE

+386 1 518 8 518
not cost free

LOG IN | MY PIC | RSS | TWITTER | MOBILE SITE | SLOVENŠČINA

TRAFFIC CONDITIONS | FREIGHT TRAFFIC | NEWS | FOR DEVELOPERS AND B2B

For developers and B2B

Single point of access for the state road network
Publicly accessible data and information

REPUBLICA SLOVENIJA
MINISTRSTVO ZA INFRASTRUKTURO

DARS **PIC** **RTV SLO**

Generate an include

An include for your web page will contain a self-refreshing map with current traffic events and a link to www.promet.si. Enter a name of a domain, where you intend to use an include, generate an include and insert generated HTML code into your web page.

Region: Slovenija | Size (width): tiny (250px) | For domain:

Include roadworks

enter your domain
(for example www.mydomain.com)

Generate

Preview

PIC SLO - traffic situation 5s

click to visit www.promet.si

List of available contents

<https://www.promet.si/portal/en/1traffic-conditions.aspx>

REPUBLICA SLOVENIJA
MINISTRSTVO ZA INFRASTRUKTURO
DIREKCIJA REPUBLIKE SLOVENIJE ZA
INFRASTRUKTURO

DARS

Data center
www.promet.si

B2B data sharing

REALIS
INFORMACIJSKE TEHNOLOGIJE

© 2017-2018 DARS d.d.
© 2007-2018 Realis RMap Infrastructure


[Traffic conditions](#)[Street cameras](#)[Traffic counters](#)[Traffic forecast](#)[Wind measuring system Burja](#)

You are logged in as ulizorin@gmail.com.

Subscribe:

Subscribe to traffic information notifications to your email or push notifications to your mobile device. For traffic events you can set your own time and location filters.

▼ [Traffic events:](#)

- > [All events:](#)
- > [Highways only:](#)
- > [Filter by time:](#)  [add filter](#)
- > [Events on my routes:](#)

- Important traffic reports
- Special traffic warning for heavy vehicles
- Weekly traffic forecast (Weekly traffic forecast. Published every thursday.)

Notification target:

- Email (ulizorin@gmail.com)
- Mobile device (Only available on supported mobile devices with the [DarsTraffic+](#) app installed and push notifications enabled on the device.)

Notification language: ▼

UNIFORM ITS ON THE MAIN CORRIDORS

- VMS, APP, C ROADS

Slovenia is one of the founding members of European project **C-Roads**.

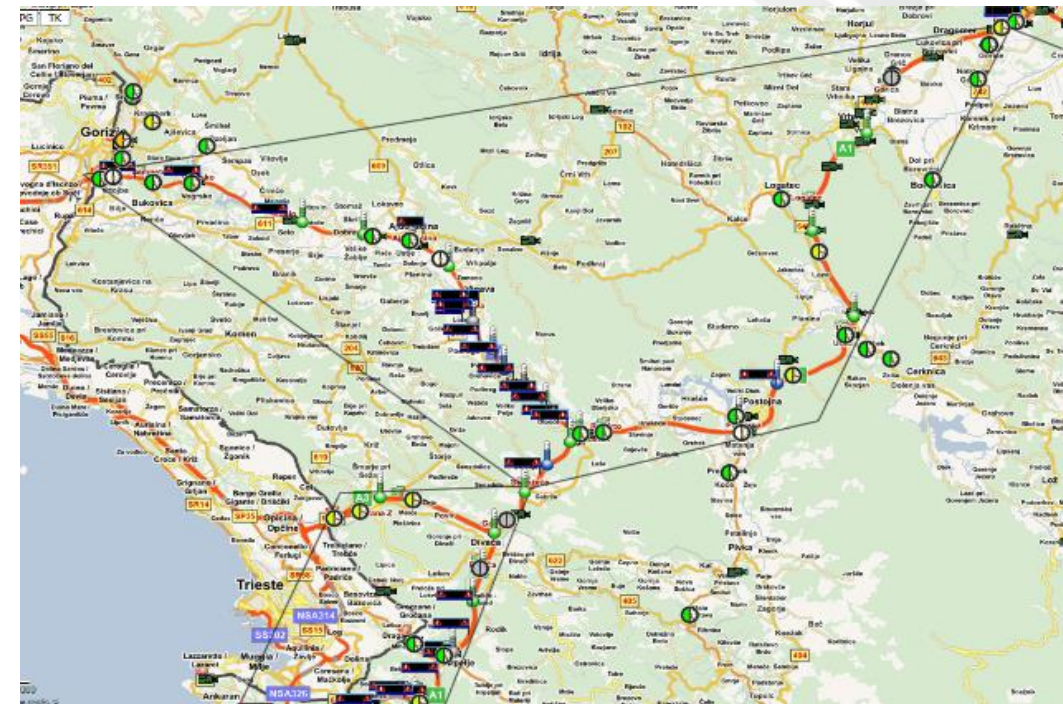
Within this project Dars will deploy several C-ITS systems within two pilot projects:

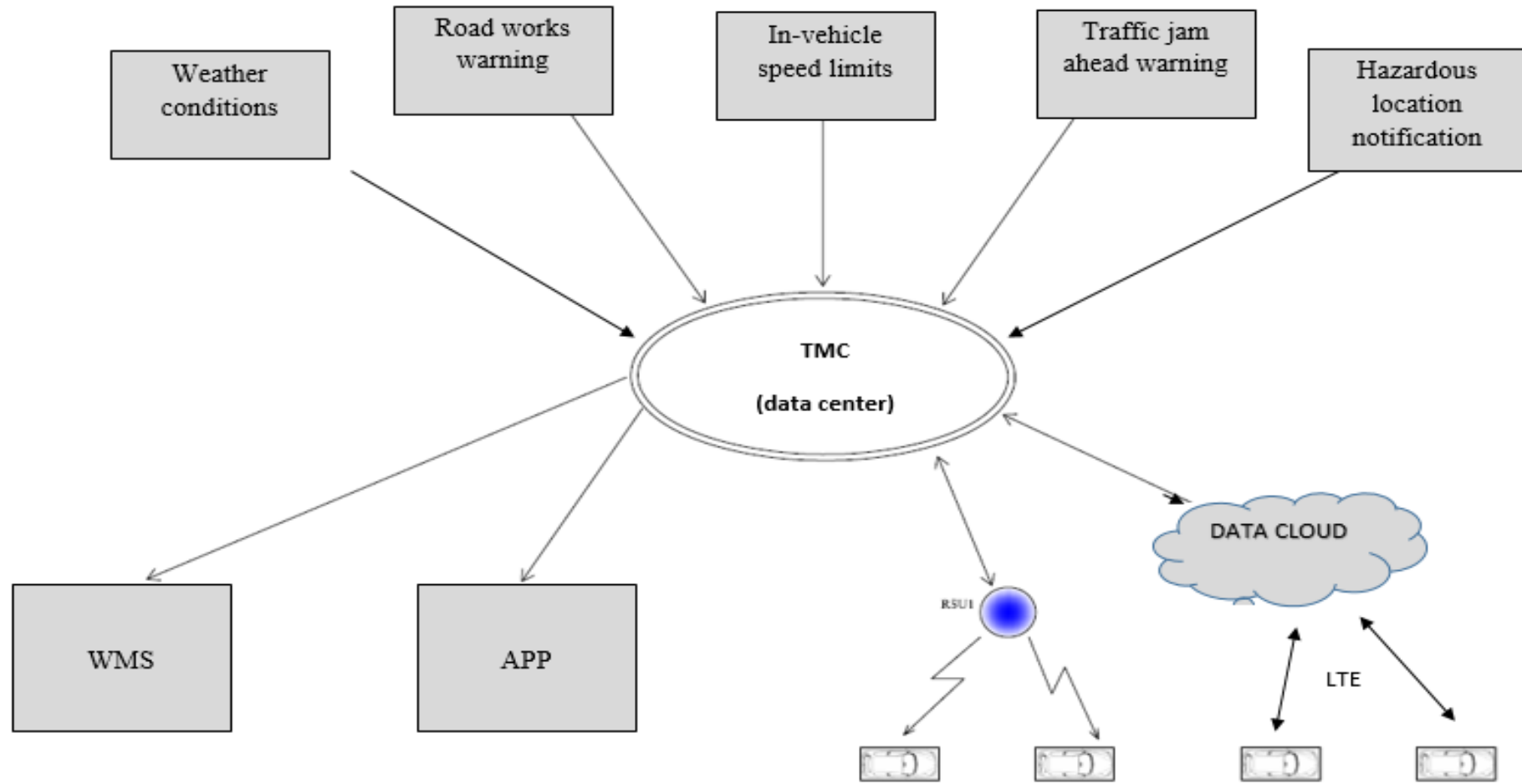
1. G5 communication
2. Cellular communication (3g/4g/LTE)

in the pilot area A1 motorway, section Ljubljana – Koper, A3 motorway, section Divača - Sežana and H4 expressway, section Razdrto – Vipava.

During these pilot projects also hybrid communication will be tested.

DATA EXCHANGE!!







DATA EXCHANGE!!

REAL TIME COORDINATION BETWEEN TMCs

DARS

Izognite se zastojem Maribor–Zagreb

Spoštovani vozniki, v primeru zastojev na relaciji Maribor (SLO)–Zagreb (HR) upoštevajte začasno prometno signalizacijo (za cestninsko postajo Pesnica). Alternativna pot: Šentilj–Pesnica–Lendava–Pince–Letenye (H)–Zagreb (HR), po kateri boste svoj cilj dosegli najhitreje. Navedena alternativna pot je na letaku označena z zeleno barvo. Zahvaljujemo se vam za razumevanje.

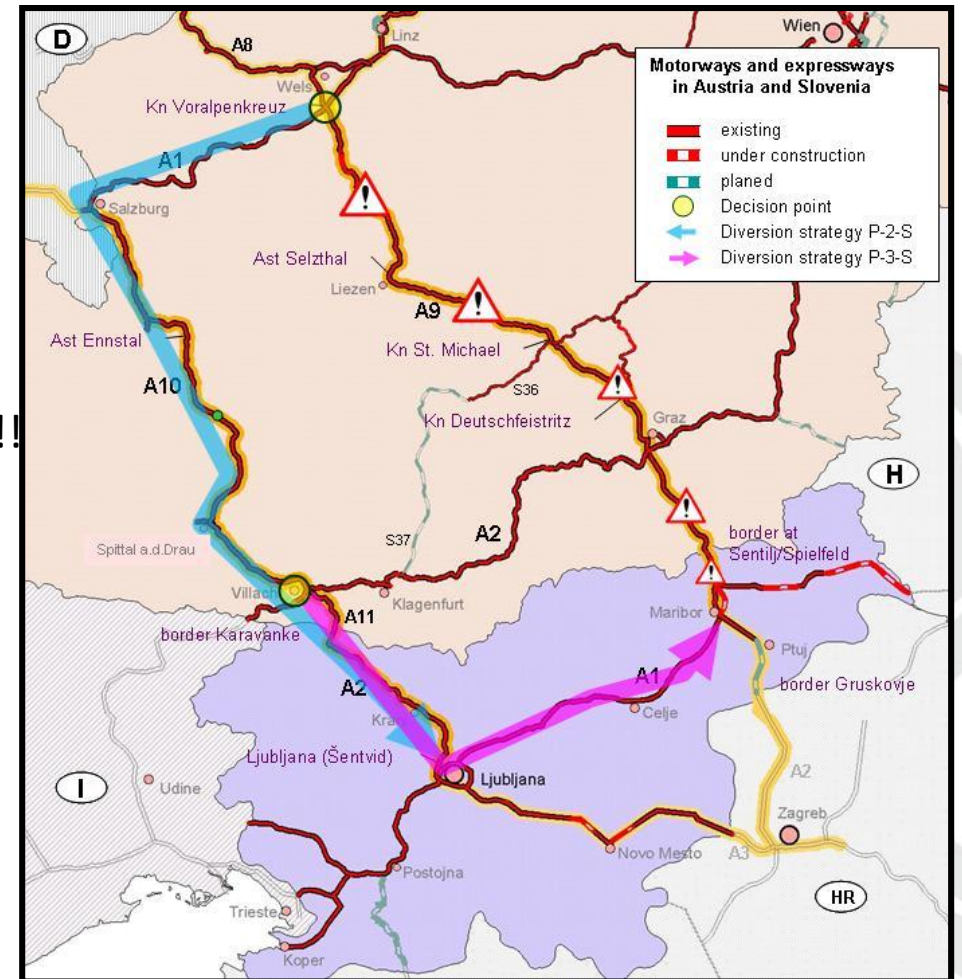
Avoid traffic congestion Maribor–Zagreb

Dear drivers, if you are travelling to Zagreb (CRO), in case of traffic congestion on the route Maribor (SLO)–Zagreb (CRO), please follow the temporary traffic signals (toll station Pesnica). Potential alternative route: Šentilj–Pesnica–Lendava–Pince–Letenye (H)–Zagreb (CRO). The mentioned alternative route is marked in green on the map below. Thank you for your understanding.

Možne alternativne poti
Potential alternative routes

118km 183km 224km

DATA EXCHANGE!!



DATA EXCHANGE!! - CONNECTION OF THE CONTROL CENTRES + INTEGRATION OF THE SYSTEMS



CLICK HERE [TO](#) WATCH THE VIDEO

THANK YOU FOR YOUR ATTENTION.