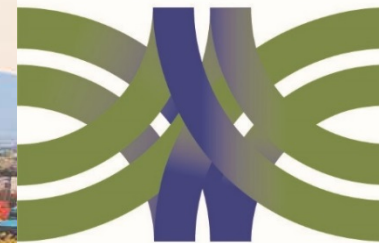


**ASECAP DAYS**



**LJUBLJANA 2018**



**46<sup>TH</sup> ASECAP STUDY & INFORMATION DAYS**

# *The Role of the Infrastructure Investments in the New EU Road Mobility Package*

*Grand Hotel Union, Ljubljana, Slovenia*  
*6-8 June 2018*

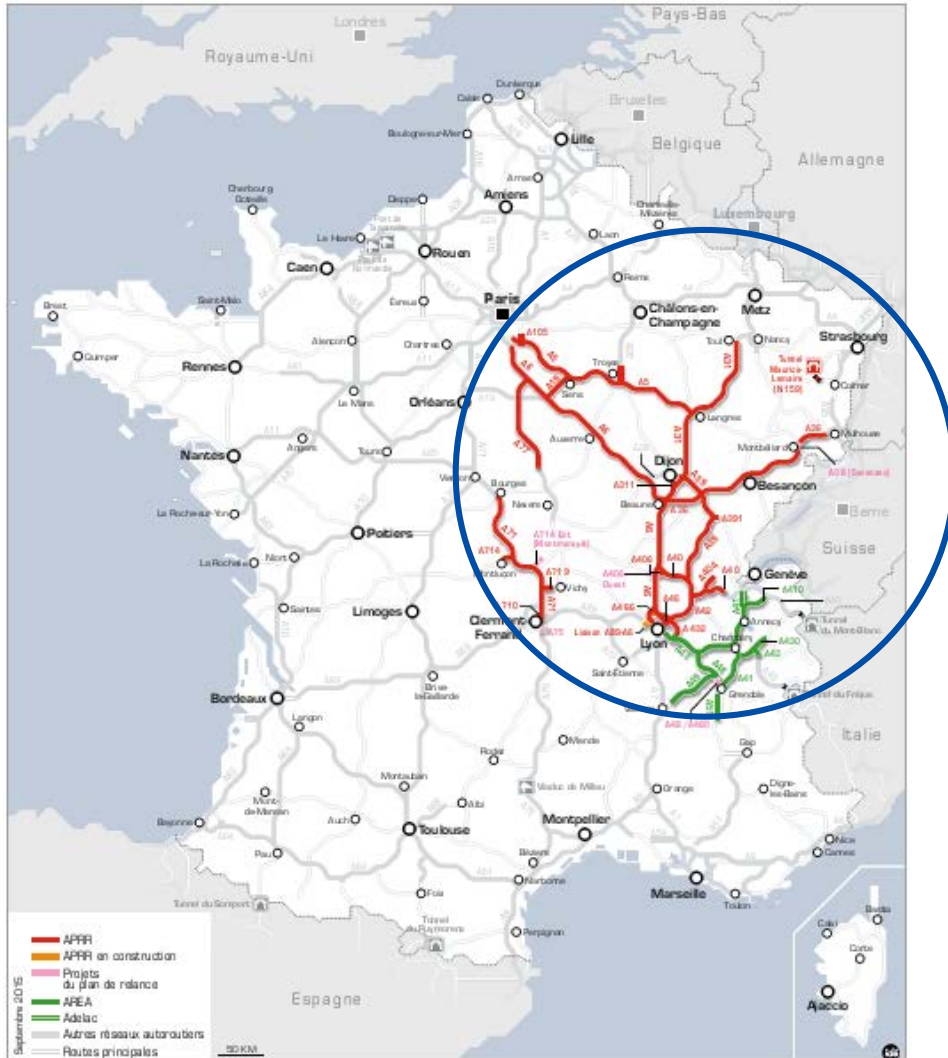
[www.asecapdays.com](http://www.asecapdays.com)



Organized by

**ASECAP**  
Association Européenne des Concessionnaires  
d'Autoroutes et d'Ouvrages à Péage

# The APRR group



Motorway group



KILOMETRES OF MOTORWAYS

**2,311 km**



**23,061 million**

km travelled



**3,500**

employees



# The French context

- The Ministry of Transport
  - 2015 - COP 21
  - 2017 - National Mobility Conference
  - 2018 - Mobility Orientation Bill
- A growing awareness of the expectations of users amongst local authorities (Department, communes, cantons).

# The French context

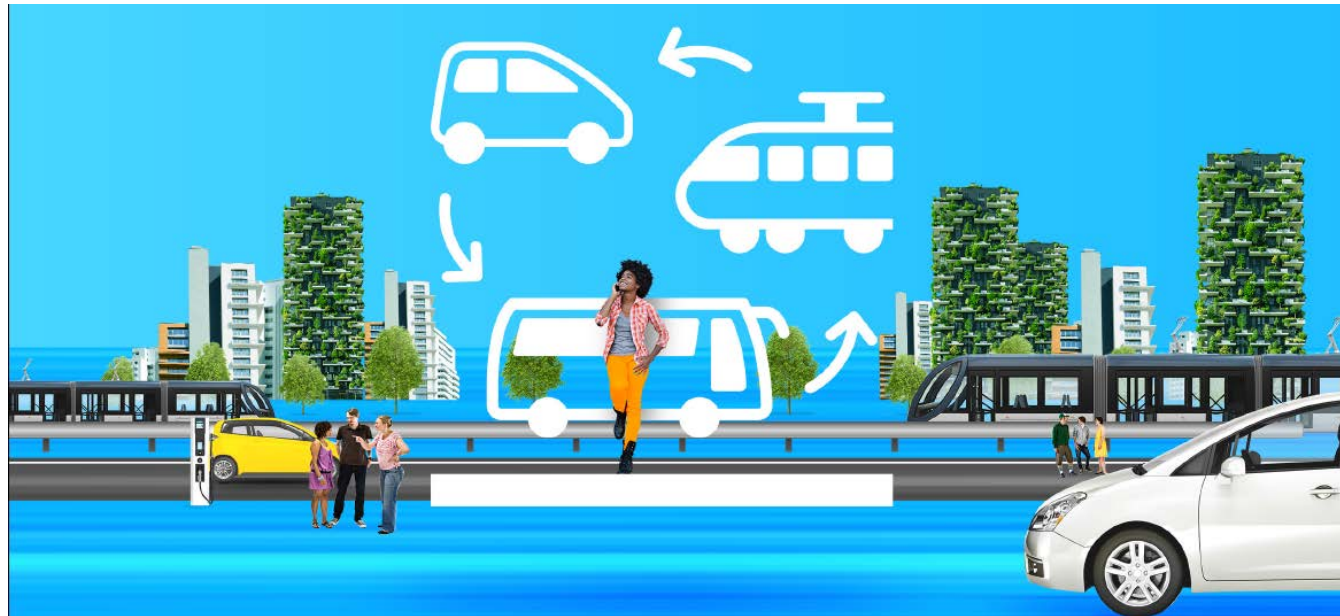
- The issues: ... towards mobility which is...
  - ...Cleaner
  - ...More connected
  - ...More equitable
  - ...More inter-modal
  - ...Safer
  - ...More sustainable



# APPR, a Mobility stakeholder

Urban motorways make mobility easier for all on a daily basis:

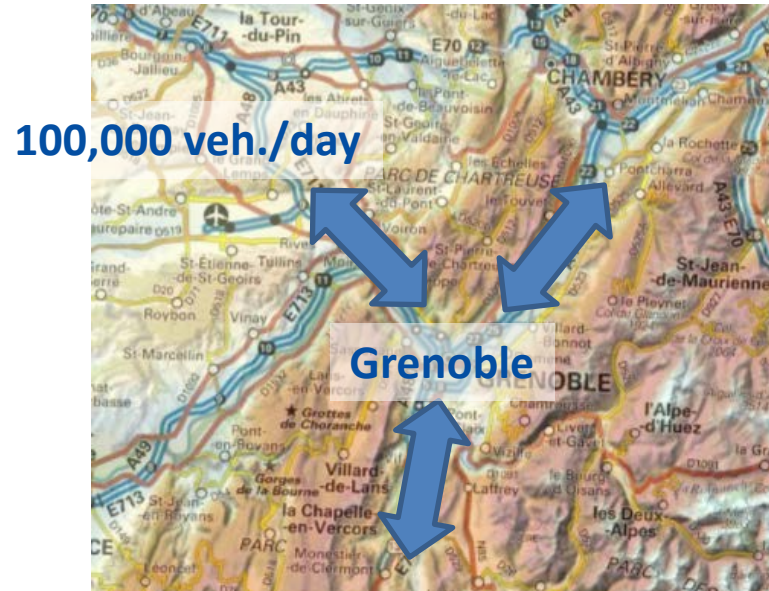
- Car pooling
- Intercity coach services
- Multi-modal hubs
- Dedicated lanes (public transport, car pooling)



# Dedicated lanes on the approach to Grenoble

## ■ The Grenoble context

- A restrictive topography
- Recurring congestion



- A community which is concerned about the protection of the environment
- The Atmosphere Protection Plan
- The GREAT project

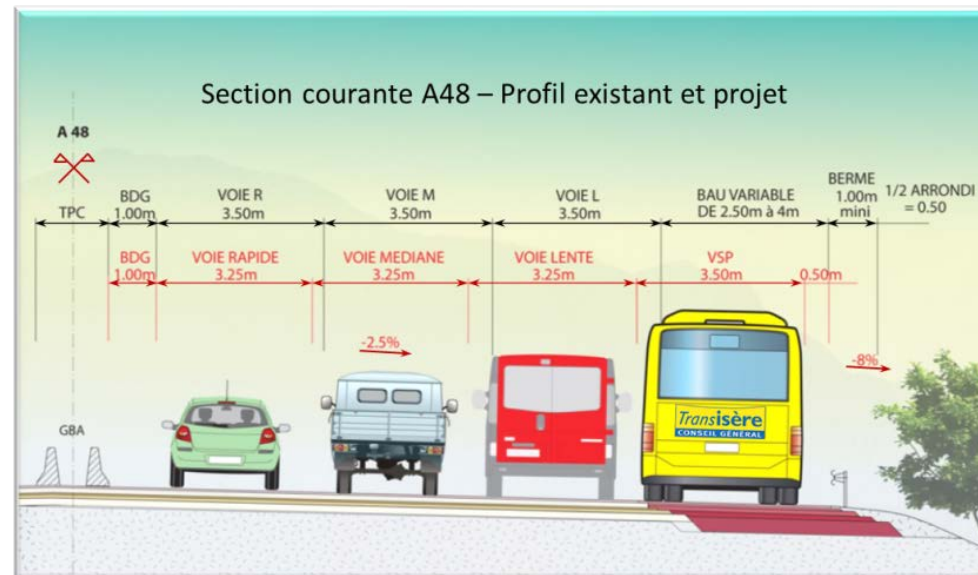




# Dedicated public transport lane

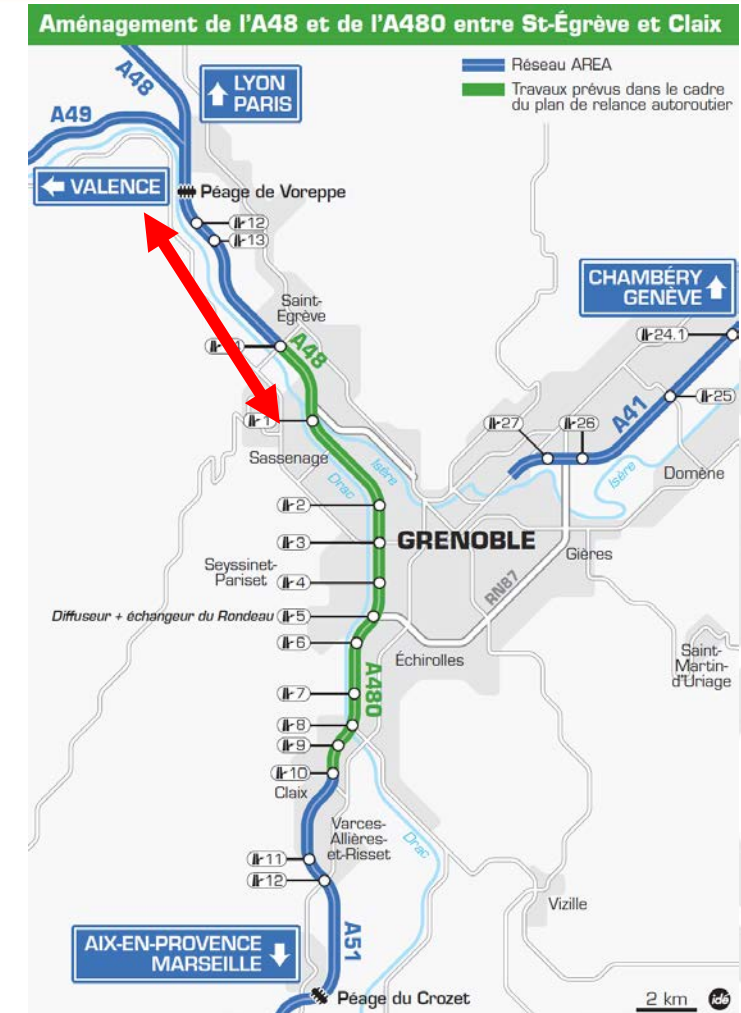
- A dedicated lane for local public transport on the hard shoulder
- 9 km on the A48 on the approach to Grenoble
- Experimentation since 2007
- Dynamically activated during rush hours

- Optimisation of the existing infrastructure
- Time saving and guarantee of journey times for passengers
- Rise in the number of daily journeys (presently 5,000)



# Dedicated car pooling lane

- Lane reserved for high occupancy vehicles (HOV - 2+)
- 8 km on the A48 on the approach to Grenoble
- A prospective study in close collaboration with State departments (Ministry and technical departments) and local authorities (Department, Préfecture, Metropolitan area...)

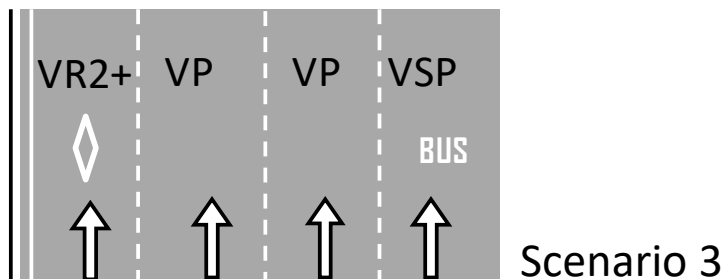
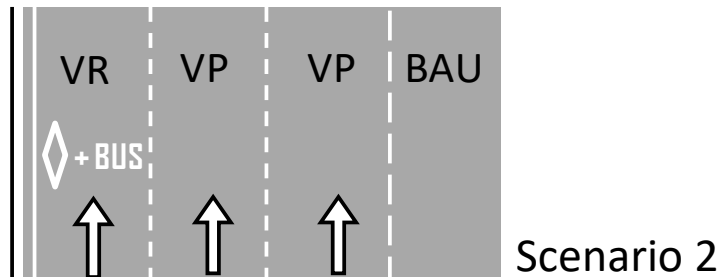
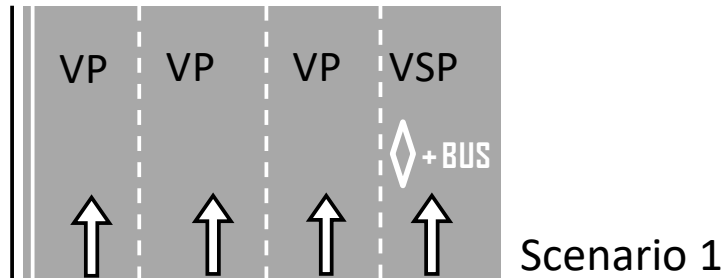




# Dedicated car pooling lane

## ■ Several scenarios

### • Lateral position



- Longitudinal position
- Dynamic operation or not
- Signage



- Traffic control - penalties

# Dedicated car pooling lane

- A first in France on a motorway concession
- For the creation of the French VR2+ guide
- An ambitious schedule:
  - Summer 2018: Prospective study finalised
  - Autumn 2018: Validation by the Ministry of Transport
  - Summer 2019: Implementation of the experiment

Thank you for your attention