



Design: www.treasurelab.de - © fotolia.com - Spain, Madrid 2016

44TH ASECAP STUDY & INFORMATION DAYS 2016

Directives 2004/54/EC and 2008/96/EC on "Tunnel safety and TENS safe management"

Intercontinental Hotel
23-25 May 2016

www.asecapdays.com

Kallistratos Dionelis
ASECAP General Secretary



Organized by



DIRECTIVES 2004/54/EC & 2008/96/EC



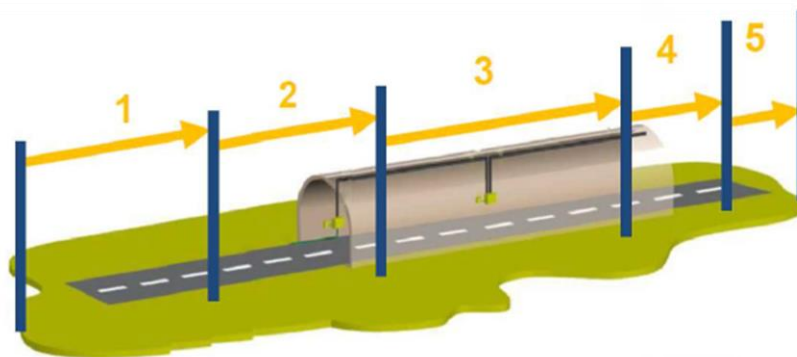
DIRECTIVE 2004/54/EC (3)

Minimum safety requirements for tunnels in the Trans-European Road Network

DIRECTIVE 2008/96/EC (1,2,4,5)

Road infrastructure safety management

Art. 1 §4 : This Directive shall not apply to road tunnels covered by Directive 2004/54/EC.



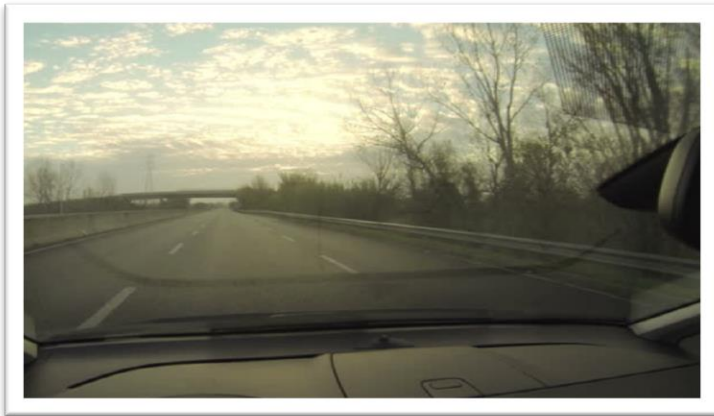
Portal area: (2,4)

DRIVER PERSPECTIVE

OPEN ROADS + TUNNELS = ROAD

User sees both, open roads and tunnels, as one:

However, the two sectors are different and act differently



DIRECTIVE 2004/54/EC

MINIMUM SAFETY REQUIREMENTS FOR TUNNELS

Tunnels under Dir. 2004/54/EC : Legal text + Annexes

- ✓ Strict
- ✓ Technical
- ✓ Detailed
- ✓ Complex Risk Matrix



The Directive considers the **Tunnels** as *Islands*:

It fully ignores that Tunnels are parts of a *holistic road infrastructure network*



DIRECTIVE 2008/96/EC

ROAD INFRASTRUCTURE SAFETY MANAGEMENT

Open roads under Dir. 2008/96/EC:

TENs safety management

- ✓ Less Detailed
- ✓ Less Strict
- ✓ Less Complex Risk Matrix



The Directive considers only the Open Roads and fully ignores the possibly existing Tunnels.



**Both directives must maintain their differences
and
be addressed in a separate way**

- The Tunnels' characteristics must be properly addressed
- The Open Roads' characteristics must be dully managed

The issue in question is:

“ What happens in a **Portal area**, where the Road enters the Tunnel ? ”

OPEN ISSUES

- How and by whom, the technical safety rules inside the Tunnels are applied, monitored, safeguarded? How far could/should they be harmonized? Reporting
- How and by whom, the safety management requirements on open Roads are applied, monitored, safeguarded?
- How and by whom, the continuous safe Traffic flow (entering a tunnel from an open road) is managed?

ASECAP DAYS



MADRID 2016

www.asecap.com

www.asecapdays.com

Kallistratos Dionelis
ASECAP General Secretary
k.dionelis@asecap.com