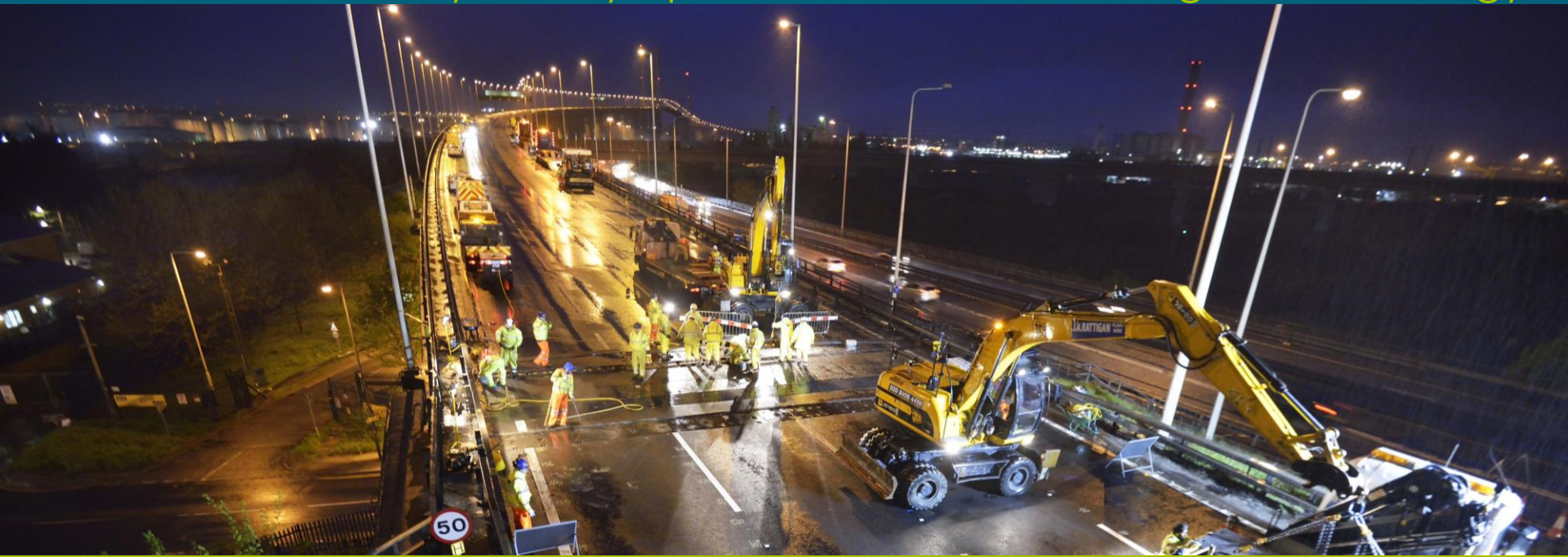


# ASECAP

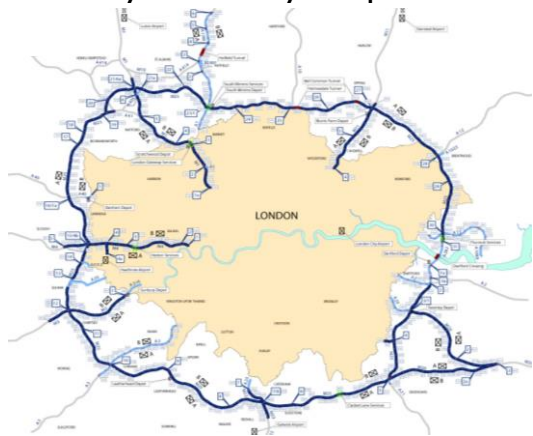
From day-to-day operations to asset management strategy



# THE LONDON M25

## Project overview

- 440km and 1800 structures
- 30-year DBFO performance contract – No toll
- Ageing network - Capital Work widening of the motorway
- Operation and routine maintenance of the infrastructure (CPS)
- Necessary heavy repairs to maintain the condition of the network (CP).



## Egis perspective

Project developer and shareholder of the **concessionaire**

“Connect Plus”

Shareholder of the consortium for

**Operations and Maintenance**

“Connect Plus Services”.

# REACTIVE MAINTENANCE



## Safety related defects

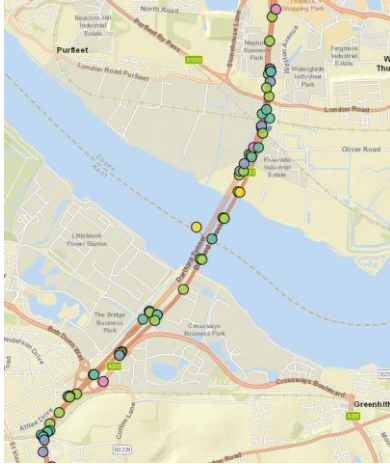
Require prompt attention, identification and mitigation

Expectations usually well understood and clearly defined

Managed through a specific channel

**Record** – Defect type, location, time, media

# ROUTINE INSPECTION AND MAINTENANCE



**Deliver routine maintenance activities, identify and close defects raised**

Intelligent data collection – condition, defects with action and timeframe required

Easy access to most up to date records to plan routine maintenance activities

**Maintain** – Mobile, user friendly, with GIS and full workflow coverage

# PERFORMANCE MONITORING



**Monitor performance of assets and activities**

Reveal the impact and root cause of defects on the asset condition

Identify risks/hotspots across different asset categories

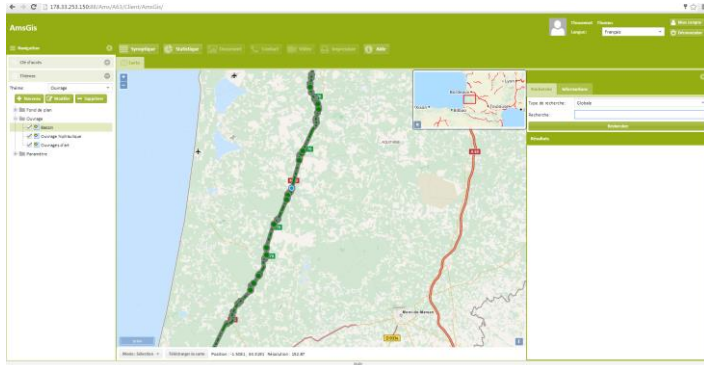
**Assure** - Live & auditable performance





# EGIS ASSET MANAGEMENT SOLUTIONS

Its proximity with live operations enables EAMS to :  
**understand a project's needs from both O&M and Concessionaire level**  
**quickly adapt to new technologies**



- foresees the evolution of its products towards other fields, by incorporating specific modules tailored to any type of infrastructure.
- guarantee a perfect integration into the day-to-day operations through to a long term concessionaire strategy

# CONCLUSION

From  **Connect Plus Services** to  **egis asset management solutions**

## An Asset Management IT system can support day to day operations to asset management strategy

- **Record** – Inventory, condition, defects, ...
- **Maintain** – Mobile, user friendly, with GIS and Full workflow coverage
- **Assure** – Live and auditable performance
- **Invest** – Analytically powerful and modular