

Asecap Days 2017

**GIS Apps as a business enabler
examples from Hellastron members**

Giorgos Kiouisis

Head of ITS working group, HELLASTRON

Hellastron Network



Information classes of a Tollway GIS

Geometry

- Aerial photography
- 3D Mapping / drones
- As Built CAD drawings

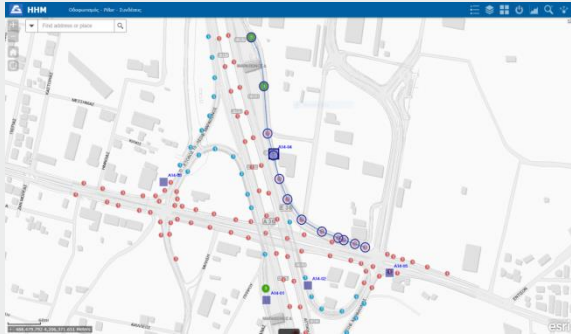
Assets

cameras, loops, signage, speed limit zones, shaft covers, guard rails, safety barriers, fencing, road markings, sound barriers, irrigation network, power network, power transformers, generators etc.

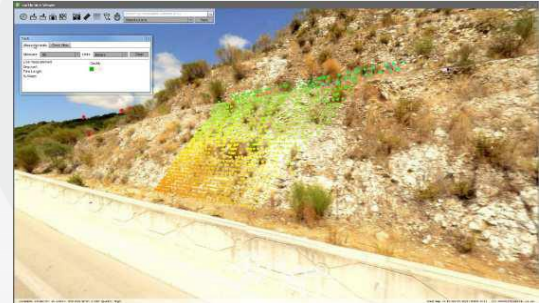
Fused Data

- Meteo
- Environmental
- Noise
- Geology
- Incidents
- Failures
- Traffic counts
- etc.

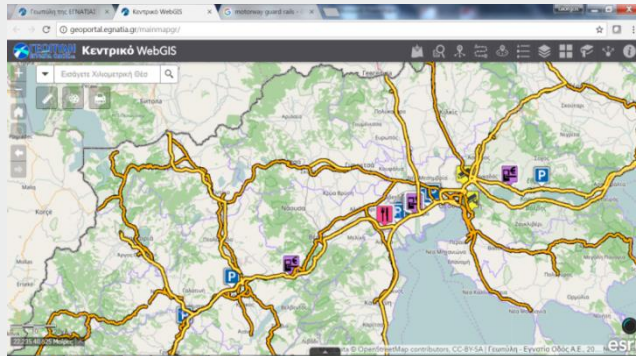
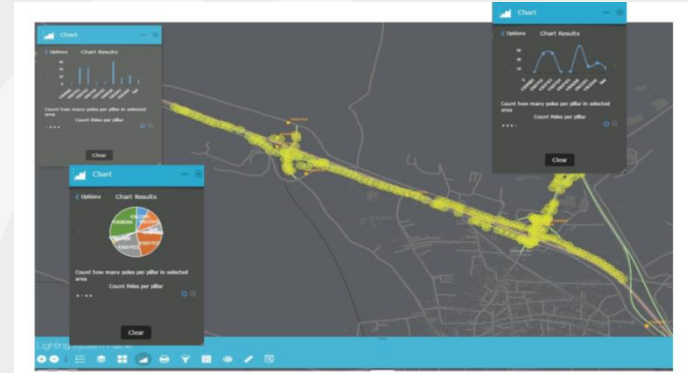
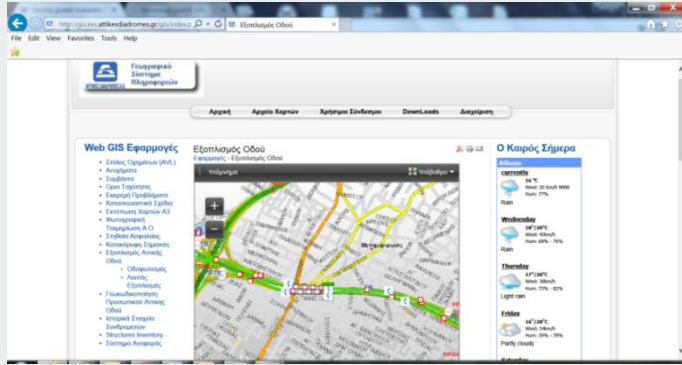
Info digitization and visualization



Coupling the digital map with video, images and assets

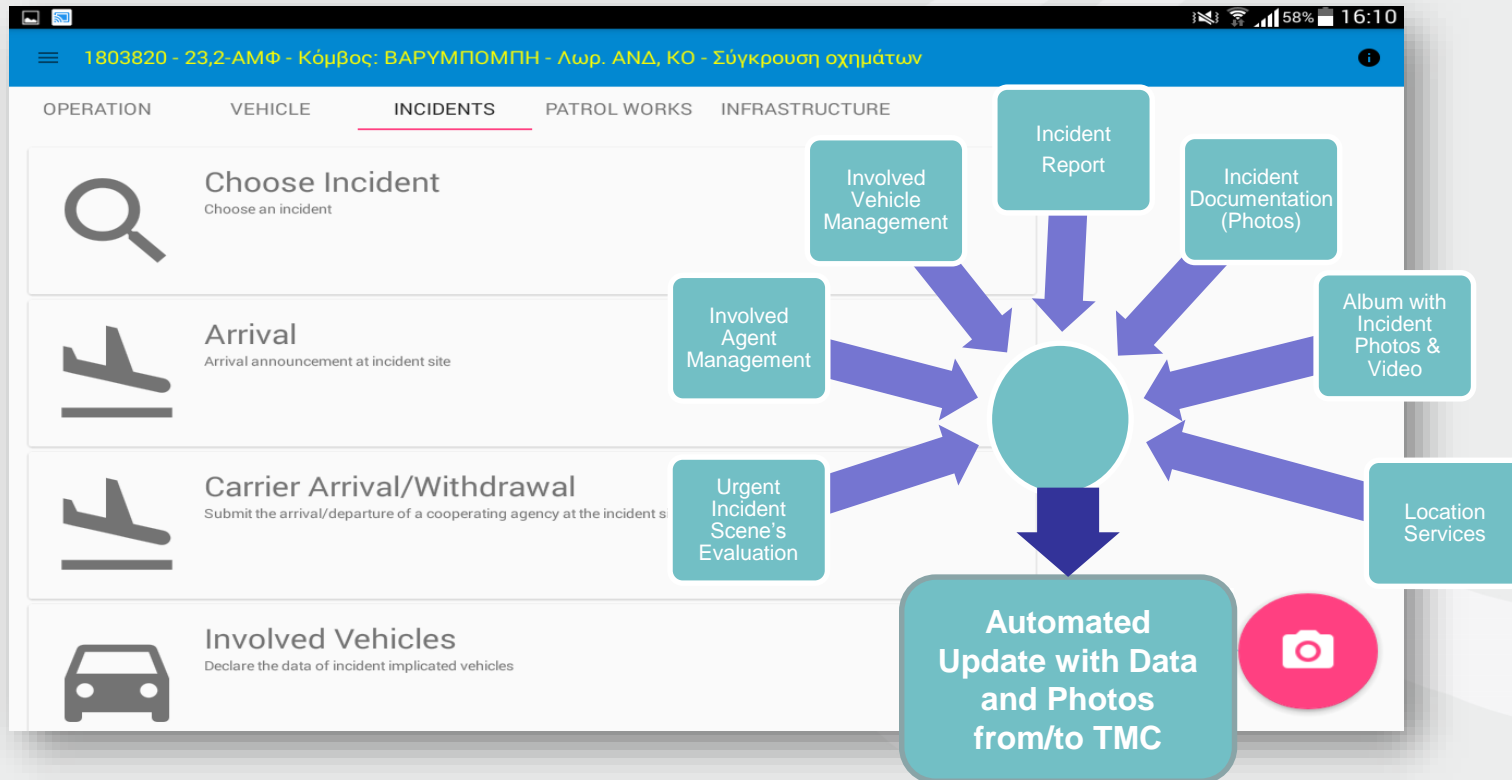


GIS portals



- Application templates
- Web services

Ex #1 – Incidents management



Ex #1 – Incidents management

The screenshot shows a GIS application interface. On the left, there is a 'Query' panel with a 'Tasks' tab and a 'Results' tab. The 'Results' tab shows a list of features with the following details:

- Number of features found: 43
- Total DAC repository table: 17
- class: 17
- subclass: Electromechanical - PUO
- discipline: Traffic_Management_Systems
- sub_discipline: Civil Works
- subclass: PA-NO
- revision: 0.00
- status: Approved with limitations
- title: ITS INFRASTRUCTURE FINAL DESIGN_CH_28+030-CH_70+485
- type: Design Approval Certificate
- document_origin: EE-Elm Engineering
- contract_type: IC - Main Concession
- geographic: P126Y, P130Y, P131Y, P132Y
- file: \\10.80.0.69\Desc\DAC%_1-2000017-1067\SUBMISSION CD\PA\THE FINISH ITS\AFIDN_RITS_27-06-08.zip
- revision_date: September 9, 2008
- comments: change_start(m): 34,200.00

In the center, a map shows a road section with various markers and labels. On the right, a 'Path axis' panel displays the following data:

- chainage_start(m): 135,000.00
- chainage_end(m): 136,000.00
- routekey: 15

Below the 'Path axis' panel, there is a 'Related Tables' list with the following items:

- Electromechanical and PUO
- Structures
- Pavements
- Hydraulics and Irrigation
- Environmental and Health & Safety
- Buildings
- Signing and Safety barriers

The screenshot shows a GIS application interface displaying an accident report. The map shows a road section with various markers and labels. A 'Photos' panel is open, showing a photo of a car accident on a road. The photo shows a white car with significant damage on the side of the road, with emergency personnel and equipment nearby.

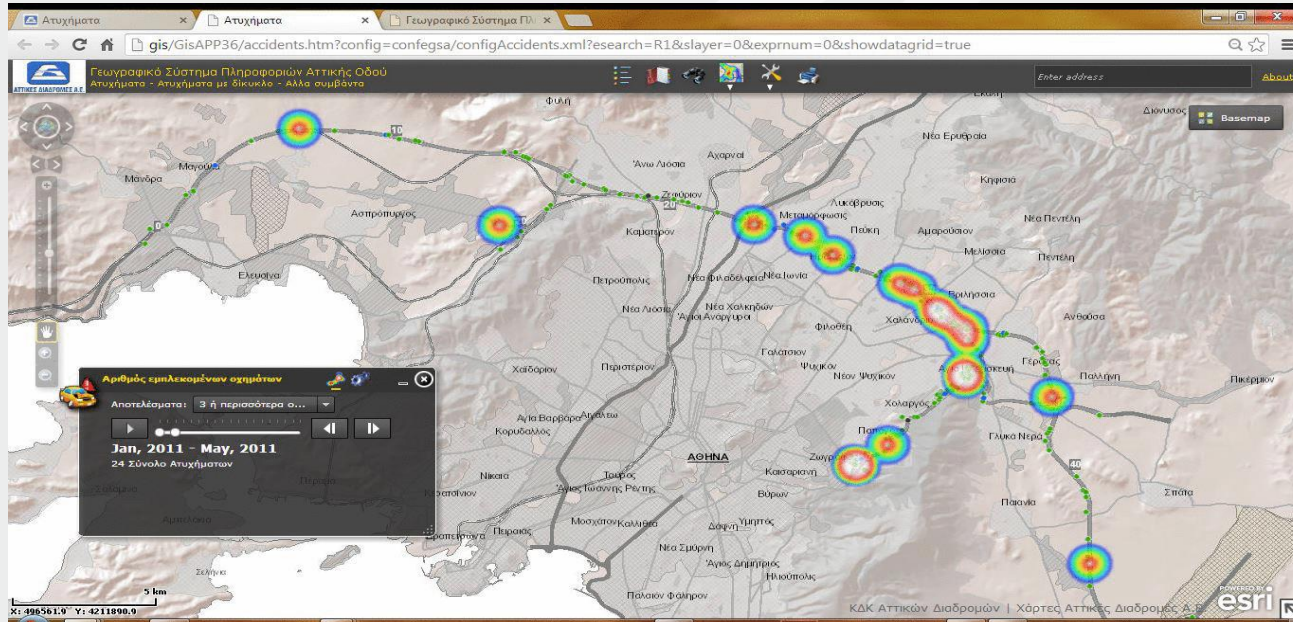
The 'Accidents to Athens: 03:45:00' panel displays the following data:

- Issue id: 1753092
- Date: 5
- Month: 7
- Year: 2015
- Time: 03:45:00
- Type: Πρόσφυση σε αυτοκινητό
- Status: Κλειστό
- Direction: Α
- acc_sectio: Νότιος
- Interchange: E044
- Toll station: Θήβα - Χαλκίδα
- toll booth: E044
- Tunnel: E044

Below the photo, there is a 'Photopath' section with the following URLs:

- http://10.80.0.71/incidents_photos/0001129386/1129386
- http://10.80.0.71/incidents_photos/0001129386/1129386
- http://10.80.0.71/incidents_photos/0001129386/1129386_35_1010_CMF_IMG_0140416_185056_00738987.jpg

Ex #2 - Black spots analysis



Ex #3 – Driving Behavior

AVL 20161228

Γεωγραφικό Σύστημα Πληροφοριών

Ταχύτητα Patrol

ΑΜΒΡΟΣΙΑΔΗΣ ΧΑΡΑΛΑΜΠΟΣ	68
ΔΙΜΙΚΑΣ ΔΗΜ	0
ΚΟΝΙΑΡΗΣ ΠΑΝ	0
ΚΟΛΙΟΥΡΗΣ ΒΑΣΙΛΕΙΟΣ	1
ΝΤΟΚΟΣ ΙΩΑ	32
ΠΑΡΑΣΙΔΗΣ ΑΝΑΣΤΑΣΙΟΣ	1
ΠΕΛΟΝΟΥΛΑΣ ΓΡΗ	77
ΡΩΔΗΣ ΝΙΚΟΛΑΟΣ	79
ΤΟΥΜΠΑΚΑΡΗΣ ΔΗΜ	80
ΧΟΛΕΒΑΣ ΓΕΩ	0

Ταχύτητα Ομάδες Επέμβασης

PERNDRICA ERALD	0
ΥΤΕΛΟΠΟΥΛΟΣ ΓΕΩ	65
ΔΕΝΑΡΗΣ ΓΕΩ	18
ΚΑΤΣΑΔΟΥΡΗΣ ΠΑΝ	0
ΚΙΟΥΣΗΣ ΑΘΑΝΑΣΙΟΣ	0
ΜΑΖΑΡΑΚΗΣ ΓΕΩ	77
ΜΠΙΑΚΗΣ ΣΤΑ	52
ΜΠΟΥΡΧΑΣ ΑΘΑ	62

ΠΑΡΑΣΙΔΗΣ ΑΝΑΣΤΑΣΙΟΣ /ΥΝΤ 9339

Πλακάκις ΥΝΤ 9339

Ταχύτητα 1

Ώρα 5/17/2017, 14:41:52

Αναφορά Timed Event

Χιλ. Δελτης 114,551

Κατάσταση 1

Διαδρομή 100110259

Οδηγός ΠΑΡΑΣΙΔΗΣ ΑΝΑΣΤΑΣΙΟΣ

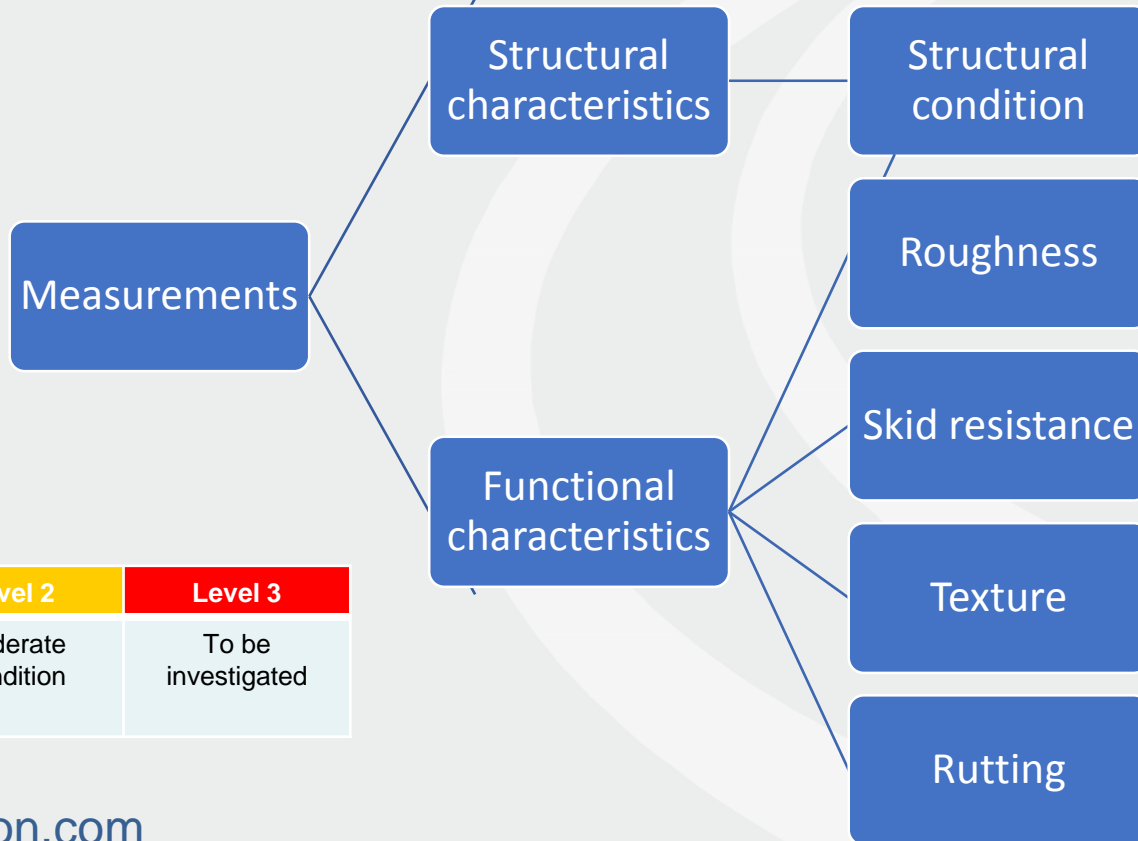
Κινητή 0

Όχημα FORD

1 of 3

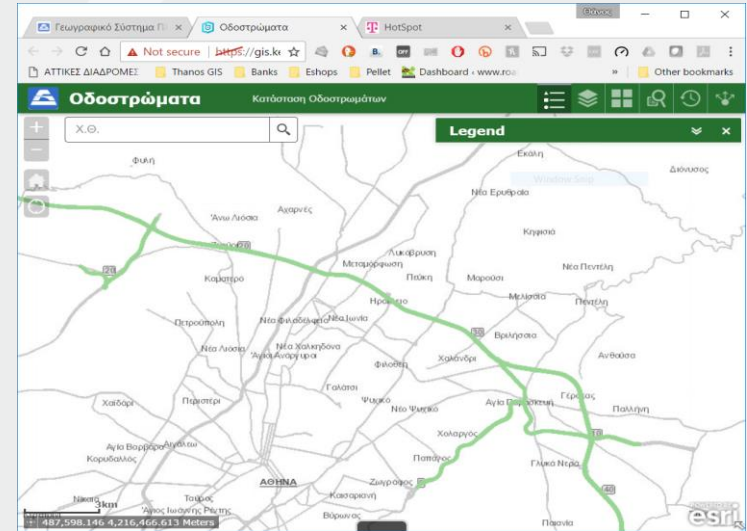
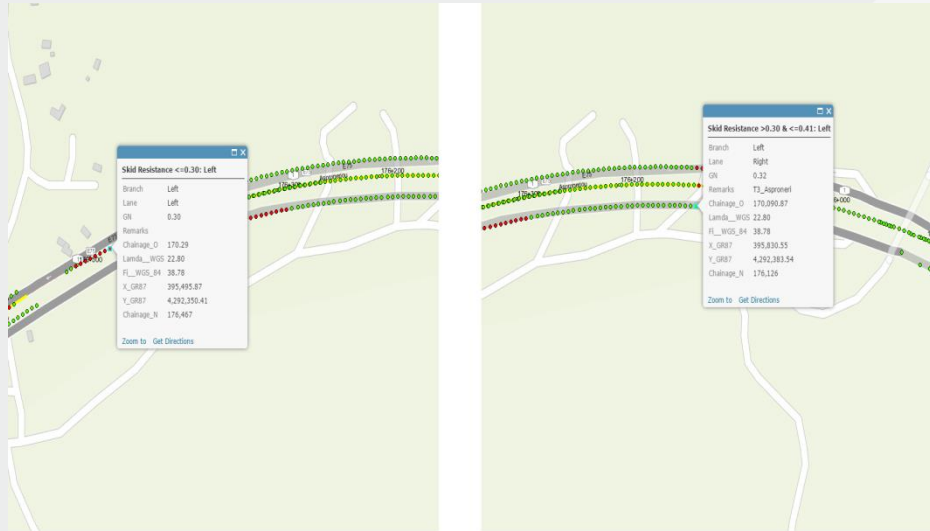
Αττικές Διαδρομές Α.Ε. Attikes Diadromes S.A. | ATTIKES DIADROMES

Ex #4 – Pavement condition monitoring

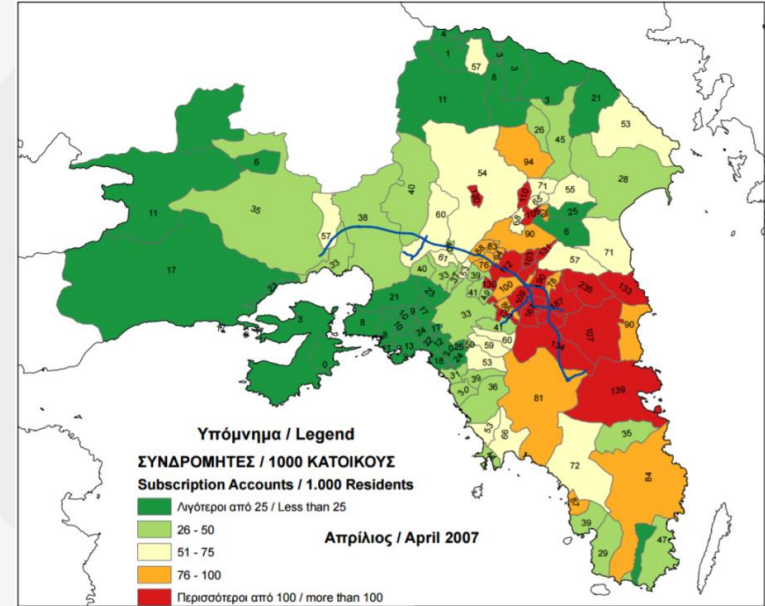
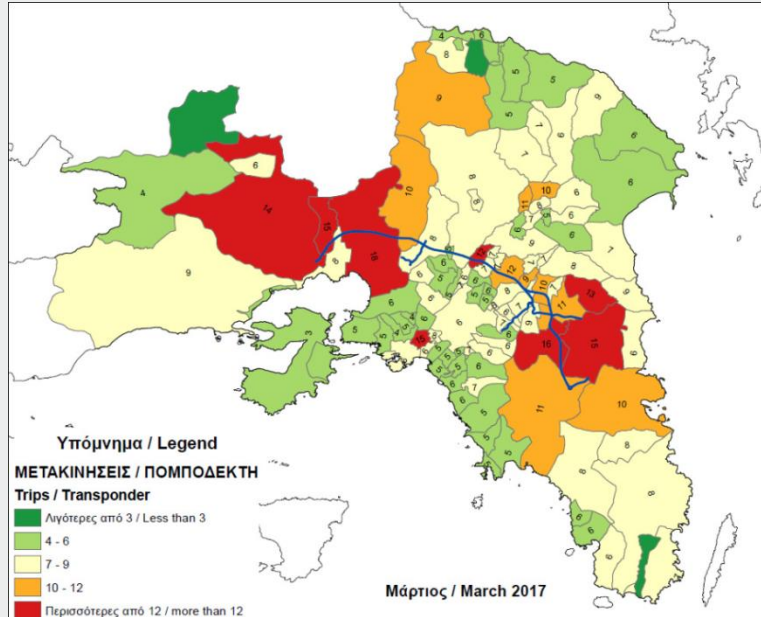


Level 1	Level 2	Level 3
Good Condition	Moderate Condition	To be investigated

Ex #4 – Pavement condition monitoring



Ex #5 - Customer base analytics



Thank you !

Giorgos Kiouisis
Head of ITS working group, HELLASTRON