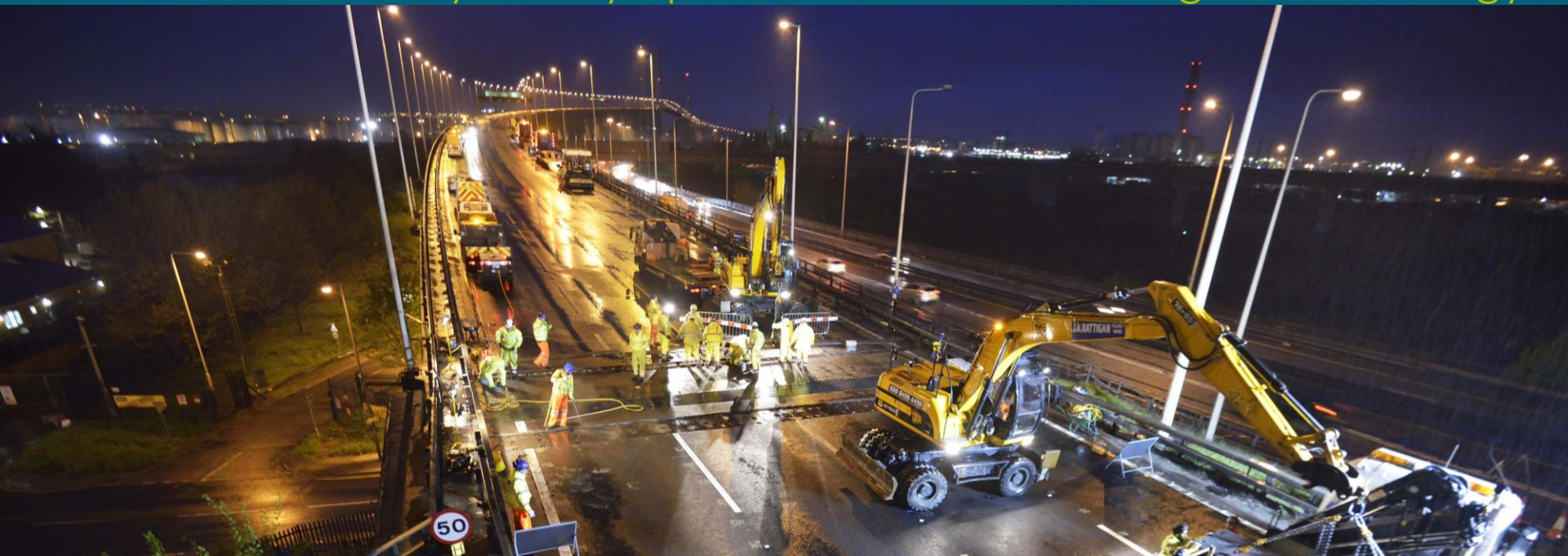


ASECAP

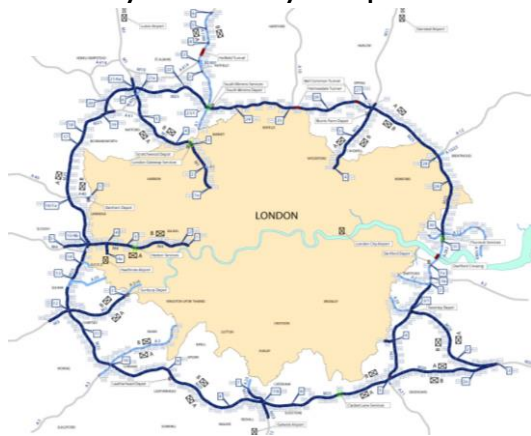
From day-to-day operations to asset management strategy



THE LONDON M25

Project overview

- 440km and 1800 structures
- 30-year DBFO performance contract – No toll
- Ageing network - Capital Work widening of the motorway
- Operation and routine maintenance of the infrastructure (CPS)
- Necessary heavy repairs to maintain the condition of the network (CP).



Egis perspective

Project developer and shareholder of the **concessionaire**

“Connect Plus”

Shareholder of the consortium for

Operations and Maintenance

“Connect Plus Services”.

REACTIVE MAINTENANCE



Safety related defects

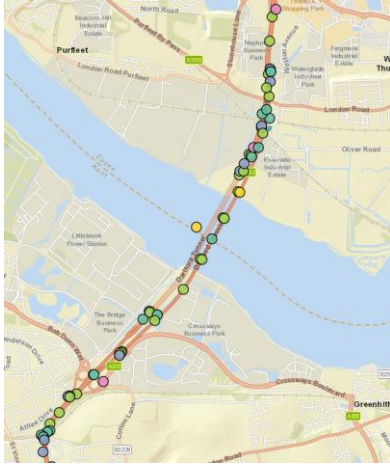
Require prompt attention, identification and mitigation

Expectations usually well understood and clearly defined

Managed through a specific channel

Record – Defect type, location, time, media

ROUTINE INSPECTION AND MAINTENANCE



Deliver routine maintenance activities, identify and close defects raised

Intelligent data collection – condition, defects with action and timeframe required

Easy access to most up to date records to plan routine maintenance activities

Maintain – Mobile, user friendly, with GIS and full workflow coverage

PERFORMANCE MONITORING



Monitor performance of assets and activities

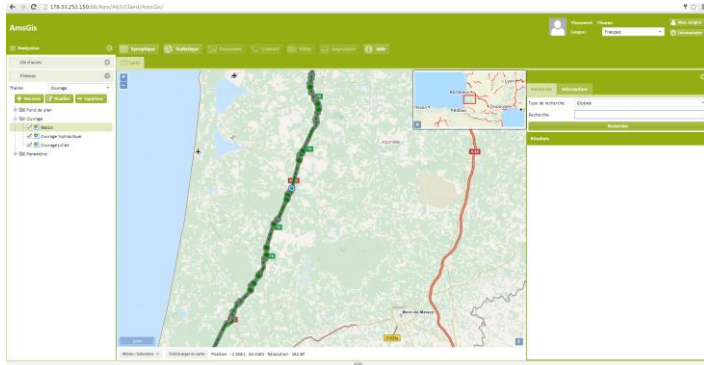
Reveal the impact and root cause of defects on the asset condition

Identify risks/hotspots across different asset categories

Assure - Live & auditable performance

EGIS ASSET MANAGEMENT SOLUTIONS

Its proximity with live operations enables EAMS to :
**understand a project's needs from both O&M and Concessionaire level
quickly adapt to new technologies**



- foresees the evolution of its products towards other fields, by incorporating specific modules tailored to any type of infrastructure.
- guarantee a perfect integration into the day-to-day operations through to a long term concessionaire strategy

CONCLUSION

From  **Connect Plus Services** to  **egis asset management solutions**

An Asset Management IT system can support day to day operations to asset management strategy

- **Record** – Inventory, condition, defects, ...
- **Maintain** – Mobile, user friendly, with GIS and Full workflow coverage
- **Assure** – Live and auditable performance
- **Invest** – Analytically powerful and modular